



# HYGIENE CATALOG 2023



HOSINOX COMPANY |





In recent years, the prevention of infection, environmental, residential and communal hygiene has become very important, also in day-to-day life.

The institutions, organisations and facilities where hygiene monitoring is considered to be appropriate, necessary and in some cases even required by law, are diverse.

These include medical facilities, the pharmaceutical industry and pharmacies, laboratories, sports facilities and schools, hotels and kitchens, industries, food factories and many more.

Invariably, the objective of hygiene monitoring is to keep the risk of contamination for people, the environment, products to a minimum.

HOSINOX offers you a diverse range of products for hygiene monitoring, both for professional, and also for quick and easy use by laypersons.

Our complete ranges of personal hygiene solutions are designed to reduce risks by ensuring correct control procedures are followed.

## ◆ ◆ ◆ HOSINOX For Stainless Steel Products ◆ ◆ ◆







# TABLE OF CONTENTS :

## 1

### HYGIENE SINK

p.5

1.1	• Single hand wash sink, with outlet tap and soap dispenser:	p.9
1.2	• Single hand wash sink with outlet tap, soap and gel dispenser:	p.9
1.3	• Single hand wash sink, with outlet tap:	p.9
1.4	• Triple hand wash sink with three outlet tap and two soap dispenser:	p.9
1.5	• Triple hand wash sink, with cladding and cabinet hinged door:	p.10
1.6	• Hand wash sink, with cabinet hinged door:	p.10
1.7	• Hand wash sink, with cladding:	p.10
1.8	• Hand wash sink, with cladding:	p.10
1.9	• Triple hand wash sink with cladding and hinged cabinet:	p.10
1.10	• Hand drayer:	p.11
1.11	• Soap or disinfectant dispenser with sensor:	p.11
1.12	• Towel dispenser:	p.11
1.13	• Hand drayer:	p.11
1.14	• Utensil dispenser:	p.11
1.15	• Glove dispenser:	p.12
1.16	• Separation barriers:	p.12
1.17	• Separation barriers:	p.12

## 2

### CLEANING AND DISINFECTION

p.13

2.1	• Wall mounted UV Light:	p.17
2.2	• UV-Disinfection cabinet:	p.18
2.3	• Wall UV-Disinfection cabinet:	p.19
2.4	• UV High power disinfection system mobile:	p.20
2.5	• UV Knife sterilizer cabinet:	p.21
2.6	• Intelligent disinfection door:	p.24
2.7	• Small intelligent disinfection door:	p.24
2.8	• Room disinfection cabinet:	p.25
2.9	• Boot cleaner:	p.26
2.10	• Boot cleaner with stair:	p.26





# TABLE OF CONTENTS :

2.11	•Walk-through boot cleaner:	p.27
2.12	•Sole cleaner:	p.27
2.13	•Pass-through sole cleaning with boot cleaner:	p.28
2.14	•Pass-through sole cleaning station:	p.29
2.15	•Apron cleaning:	p.30
2.16	•Boot and shoe support:	p.31
2.17	•Electric boot and shoe dryer:	p.32

## 3

### ACCESS CONTROL WITH HAND DISINFECTION

p.33

3.1	•Single wall mounted access control with hand disinfection:	p.37
3.2	•Double wall mounted access control with hand disinfection:	p.37
3.3	•Square wall mounted access control with hand disinfection:	p.37
3.4	•Wall mounted access control with hand disinfection and wash sink with dryer:	p.38
3.5	•Single access control with hand disinfection and cabinet:	p.39
3.6	•Square access control with hand disinfection and cabinet:	p.39
3.7	•Double control with hand disinfection with cabinet:	p.39
3.8	•Access control with hand disinfection, hand wash sink dryer and cabinet:	p.40
3.9	•Double access control with two hand disinfection, two hand wash sink, and two dryer:	p.41
3.10	•Access control with hand disinfection:	p.42
3.11	•Double access control with hand disinfection:	p.43
3.12	•Access control with hand disinfection hand wash sink dryer glove dispenser and tinsel dispenser:	p.44

## 4

### HYGIENE STATION

p.45

4.1	•Personalized hygiene station:	p.49
4.2	•Hygiene station with access control ,hand disinfection and grating sole:	p.50
4.3	•Hygiene station with hand disinfection turnstile and sole cleaner:	p.52
4.4	•Hygiene station with access control and double hand wash sink with pass through shoe cleaner with hand disinfection:	p.54
4.5	•Hygiene station with hand disinfection turnstile sole and boot cleaner:	p.56
4.6	•Hygiene station with hand disinfection, hand wash hand dryer, turnstile sole and boot cleaner:	p.58

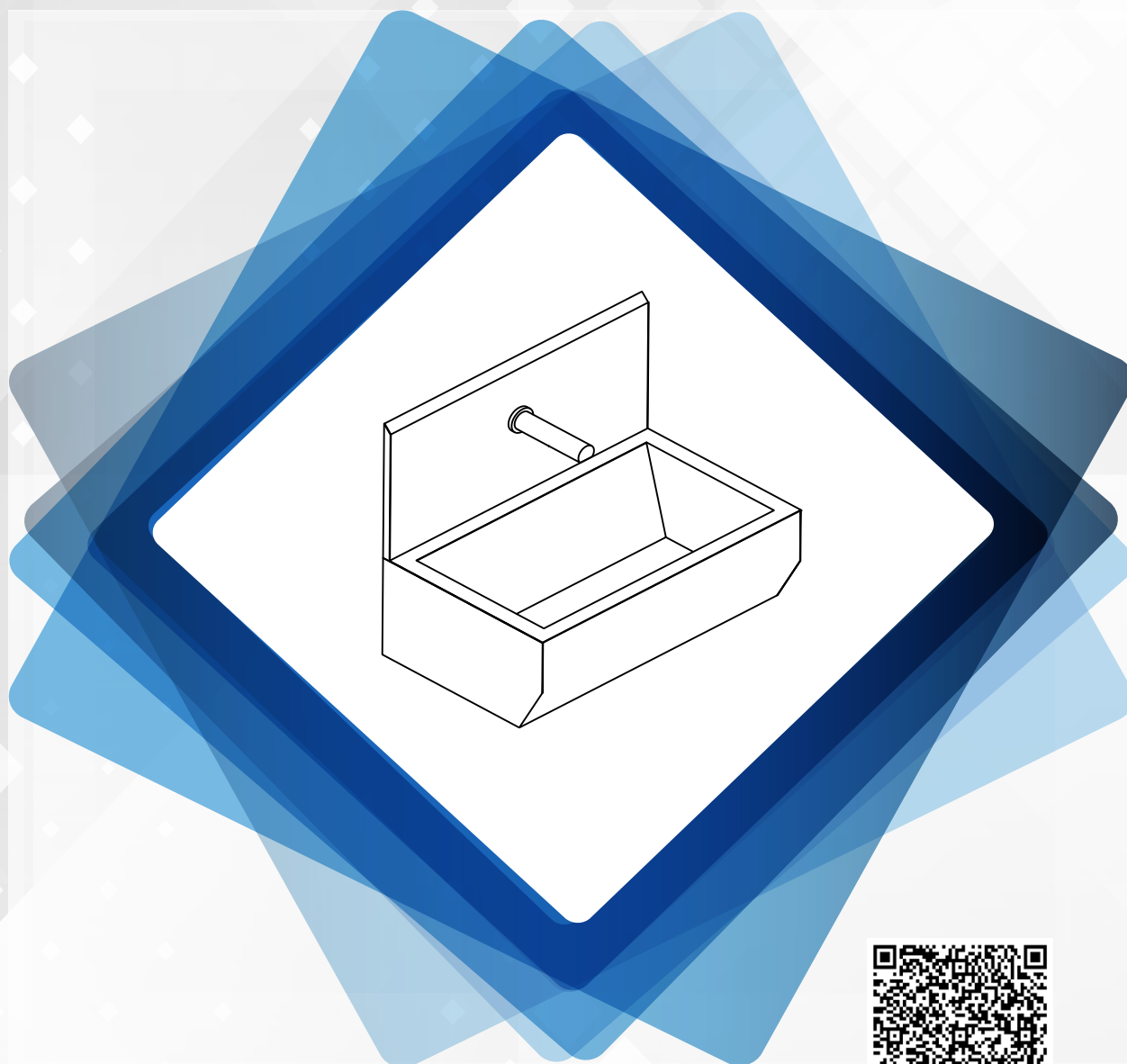


1

# HYGIENE SINK



HOSINOX COMPANY |      



HOSINOX COMPANY |









## HYGIENE SINK

p.5

- 1.1 • Single hand wash sink, with outlet tap and soap dispenser: p.9
- 1.2 • Single hand wash sink with outlet tap, soap and gel dispenser: p.9
- 1.3 • Single hand wash sink, with outlet tap: p.9
- 1.4 • Triple hand wash sink with three outlet tap and twosoap dispenser: p.9
- 1.5 • Triple hand wash sink, with cladding and cabinet hinged door: p.10
- 1.6 • Hand wash sink, with cabinet hinged door: p.10
- 1.7 • Hand wash sink, with cladding: p.10
- 1.8 • Hand wash sink, with cladding: p.10
- 1.9 • Triple hand wash sink with cladding and hinged cabinet: p.10
- 1.10 • Hand drayer: p.11
- 1.11 • Soap or disinfectant dispenser with sensor: p.11
- 1.12 • Towel dispenser: p.11
- 1.13 • Hand drayer: p.11
- 1.14 • Utensil dispenser: p.11
- 1.15 • Glove dispenser: p.12
- 1.16 • Separation barriers: p.12
- 1.17 • Separation barriers: p.12



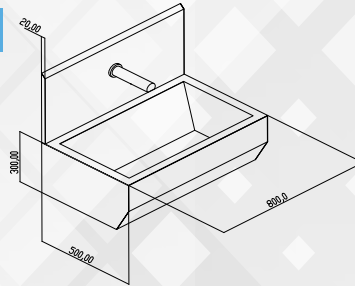
## 1 HYGIENE SINK

### • Single hand wash sink, with outlet tap and soap dispenser:

- Single hand wash sink with outlet tap (with sensor), cladding and backslash.

#### Characteristics

- Stainless steel **304**
- Hygienic-Design.
- Sensor 24V DC.
- Draining with water outlet DN 50.
- Water saving.

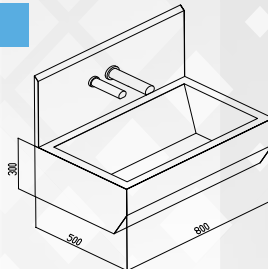
**HSST100**


### • Single hand wash sink with outlet tap, soap and gel dispenser:

- Single hand wash sink with outlet tap (with sensor), soap dispenser (with sensor) cladding and backslash.

#### Characteristics

- Stainless steel **304**
- Hygienic-Design.
- Sensor 24V DC.
- Draining with water outlet DN 50.
- Water saving.

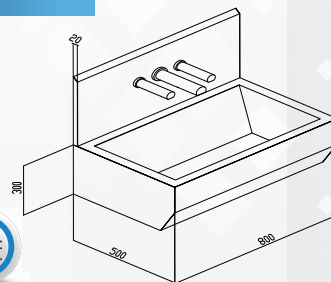
**HSST200**


### • Single hand wash sink, with outlet tap:

- Single hand wash sink with outlet tap, soap and gel dispenser (with sensor), cladding and backslash.

#### Characteristics

- Stainless steel **304**
- Hygienic-Design.
- Sensor 24V DC.
- Draining with water outlet DN 50.
- Water saving.

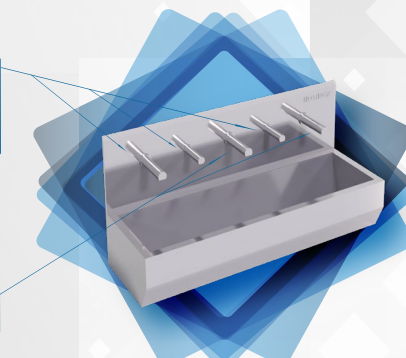
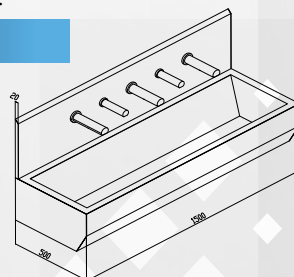
**HSST300**


### • Triple hand wash sink with three outlet tap and two soap dispenser:

- Single hand wash sink with three outlet tap (with sensor), two soap dispenser (with sensor), cladding and backslash.

#### Characteristics

- Stainless steel **304**
- Hygienic-Design.
- Sensor 24V DC.
- Draining with water outlet DN 50.
- Water saving.

**HSS3T20**






1

## HYGIENE SINK

1.5

### • Triple hand wash sink, with cladding and cabinet hinged door:

- Stainless Steel High Quality, hand wash sink with Cabinet, outlet tap (with sensor), soap dispenser (with sensor), gel dispenser (with sensor) and adjustable legs.

#### Characteristics

- Stainless steel **304**
- Hygienic-Design.
- Sensor 24V DC.
- Draining with water outlet DN 50.
- Water saving.

**HSSX200**

1.6

### • Hand wash sink, with cabinet hinged door:

- Stainless Steel High Quality, hand wash sink with Cabinet, outlet tap (with sensor), soap dispenser (with sensor), gel dispenser (with sensor) and adjustable legs.

#### Characteristics

- Stainless steel **304**
- Hygienic-Design.
- Sensor 24V DC.
- Draining with water outlet DN 50.
- Water saving.

**HSSC100**

1.7

### • Hand wash sink, with cladding:

- Angled Basin – reducing splash and forces water to drain.
- High Backsplash-Protects wall from bacteria.
- The high backsplash, angled basin, and the drain all work together to keep water in the sink and minimize water splash.
- The stainless steel sink is easy to sanitize over and over again.

#### Characteristics

- Stainless steel **304**
- Hygienic-Design.
- Sensor 24V DC.
- Draining with water outlet DN 50.
- Water saving.

**HSSC010**

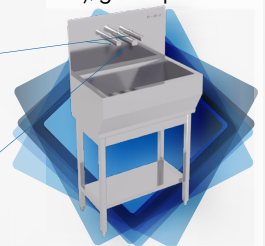
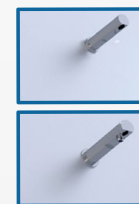
1.8

### • Hand wash sink, with cladding:

- Stainless Steel High Quality, hand wash sink with Cabinet, outlet tap (with sensor), soap dispenser (with sensor), gel dispenser (with sensor) and adjustable legs.

#### Characteristics

- Stainless steel **304**
- Hygienic-Design.
- Sensor 24V DC.
- Draining with water outlet DN 50.
- Water saving.

**HSSU100**

1.9

### • Triple hand wash sink with cladding and hinged cabinet:

- Stainless Steel High Quality.
- Hand Wash Sink with Cabinet, 3 outlet tap (with sensor) and 2 soap dispenser (with sensor).

#### Characteristics

- Stainless steel **304**
- Hygienic-Design.
- Sensor 24V DC.
- Draining with water outlet DN 50.
- Water saving.

**HSSTX20**



## 1 HYGIENE SINK

1.10

### • Hand dryer:

- Stainless steel **304**
- Hygienic design.
- Drying time: 15-20s
- Air flow: 270/m<sup>3</sup>/h

#### Dimension

- W x D x H mm
- 260 x 150 x 320

**HSHD001**

1.11

### • Soap or disinfectant dispenser with sensor:

- Stainless steel **304**
- Dispenser of soap or disinfectant.
- Refillable reservoir (800 ml).
- Contactless sensor operation.
- Level glass gauge made of break-proof polycarbonate.
- Lockable.

#### Dimension

- W x D x H mm
- 100 x 120 x 280

**HSSD002**

1.12

### • Towel dispenser:

- Stainless steel **304**
- Capacity: 400 folded paper towels.
- Hygienic-design.
- Level glass gauge made of break-proof polycarbonate.

#### Dimension

- W x D x H mm
- 250 x 140 x 360

**HSTD003**

1.13

### • Hand dryer:

- Stainless steel **304**
- Hygienic design.
- Drying time: 15-20s.
- Air flow: 270/m<sup>3</sup>/h.

#### Dimension

- W x D x H mm.
- 300 x 150 x 320.

**HSHD004**

1.14

### • Utensil dispenser:

- Stainless steel **304**
- Hygienic design.
- Large interior for storage.
- Lid with door.
- Large draw-off opening.

#### Dimension

- W x D x H mm.
- 300 x 200 x 300.

**HSUD005**



## 1 HYGIENE SINK

1.15

### •Glove dispenser:

- Stainless steel **304**
- Hygienic design.
- Glove Dispenser wall mount.
- 3 boxes capacity.
- 3 sizes.

#### Dimension

- W x D x H mm
- 340 x 50 x 60

**HSGD006**

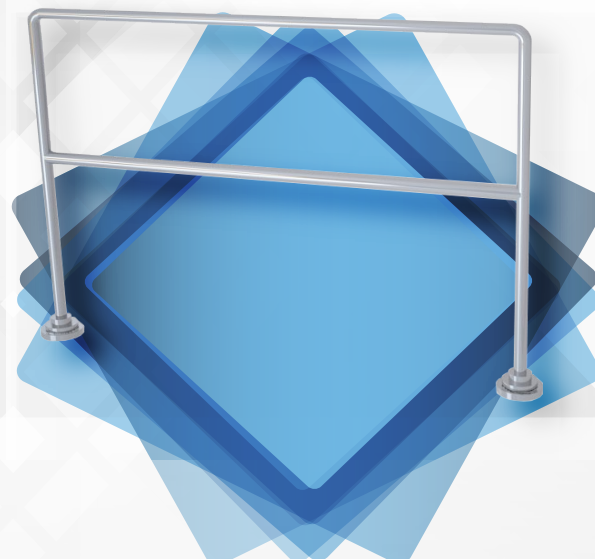
1.16

### •Separation barriers:

- Stainless steel **304**
- Attractive and functional design ideal for directing staff.
- The vertical bars are spaced vertically at 100 mm intervals.
- Variety of leg styles available.

#### Dimension

- W x D x H mm
- 2000L x 1100H (mm).

**HSSBH01**

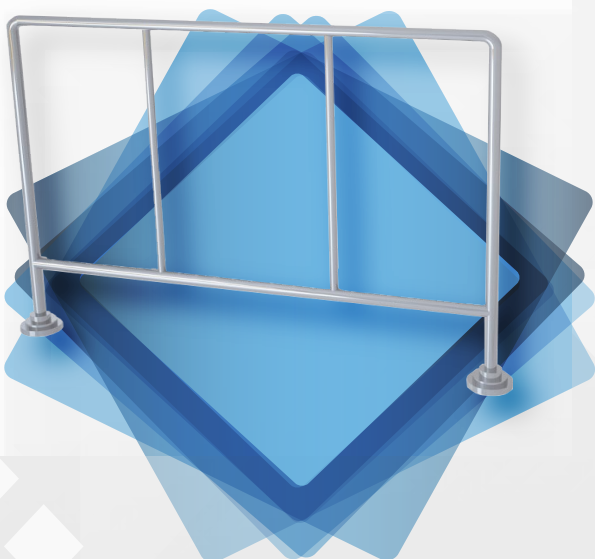
1.17

### •Separation barriers:

- Stainless steel **304**
- Attractive and functional design ideal for directing staff.
- The vertical bars are spaced vertically at 100 mm intervals.
- Variety of leg styles available.

#### Dimension

- W x D x H mm
- 2000L x 1100H (mm).

**HSSBV02**



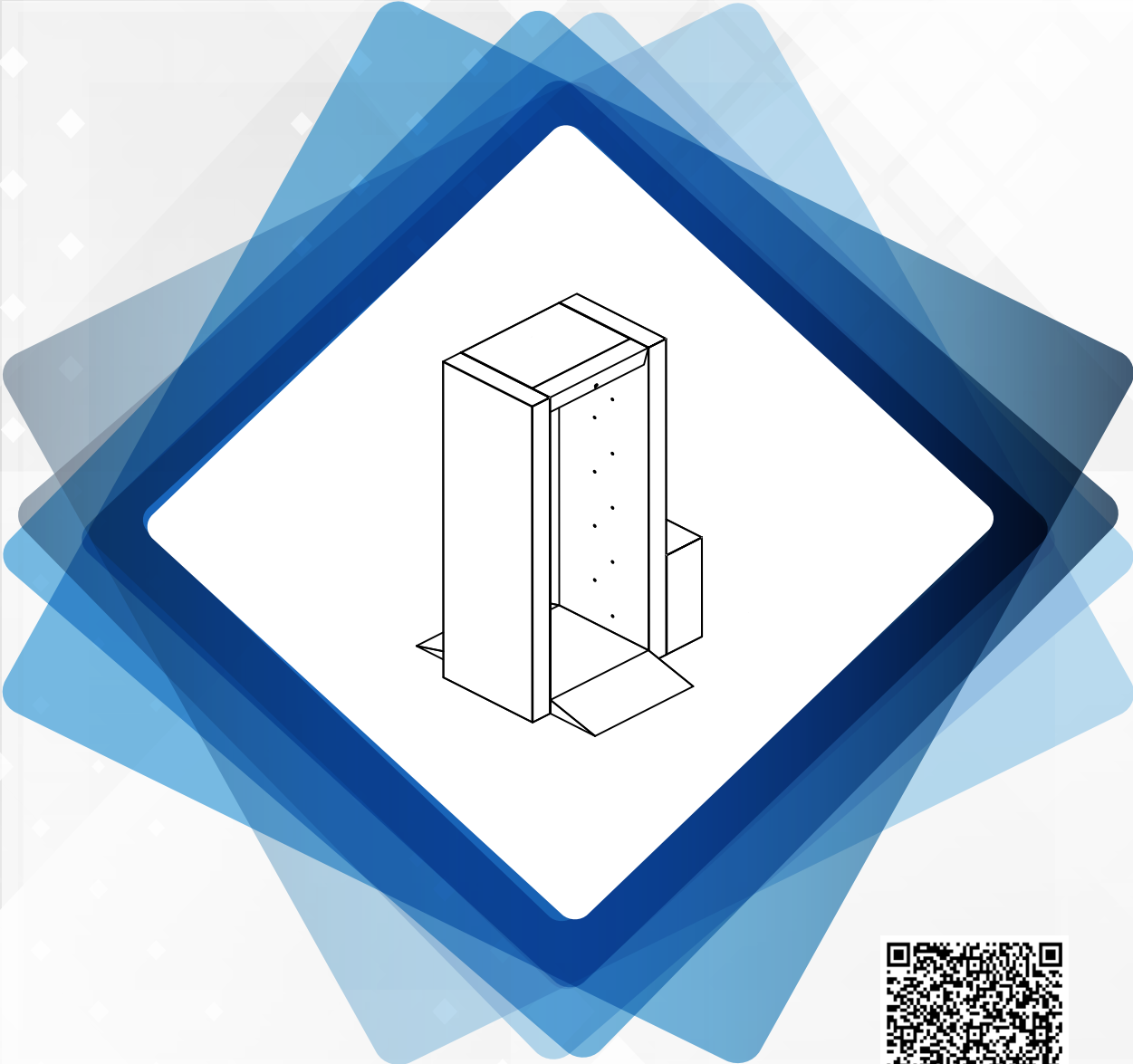


2

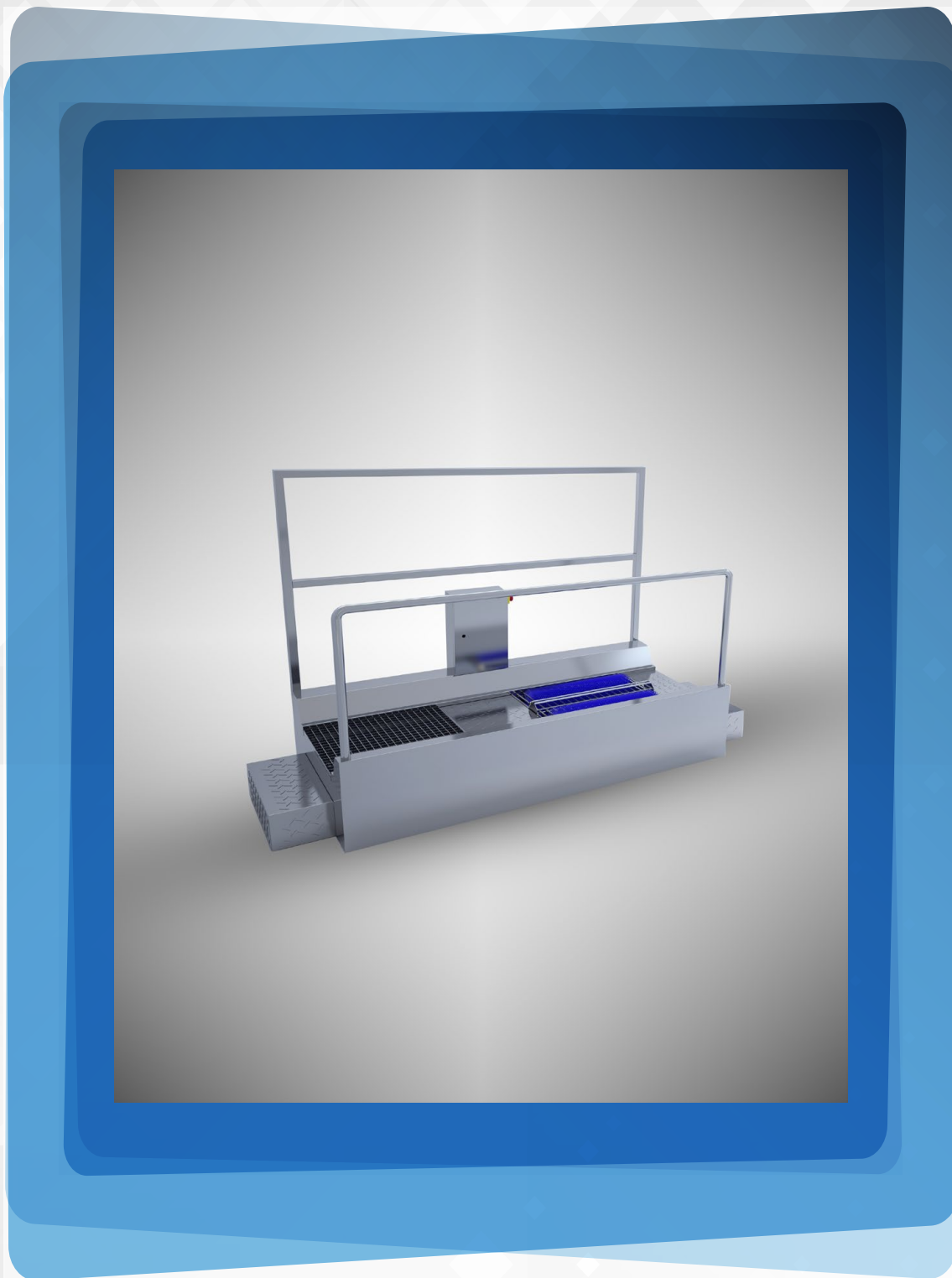
# CLEANING AND DISINFECTION



HOSINOX COMPANY |      



HOSINOXCOMPANY | 







## CLEANING AND DISINFECTION

p.13

- 2.1 •Wall mounted UV Light: p.17
- 2.2 •UV-Disinfection cabinet: p.18
- 2.3 •Wall UV-Disinfection cabinet: p.19
- 2.4 •UV High power disinfection system mobile: p.20
- 2.5 •UV Knife sterilizer cabinet: p.21
- 2.6 •Intelligent disinfection door: p.24
- 2.7 •Small intelligent disinfection door: p.24
- 2.8 •Room disinfection cabinet: p.25
- 2.9 •Boot cleaner: p.26
- 2.10 •Boot cleaner with stair: p.26
- 2.11 •Walk-through boot cleaner: p.27
- 2.12 •Sole cleaner: p.27
- 2.13 •Pass-through sole cleaning station: p.28
- 2.14 •Pass-through sole cleaning with boot cleaner: p.29
- 2.15 •Apron cleaning: p.30
- 2.16 •Boot and shoe support: p.31
- 2.17 •Electric boot and shoe dryer: p.32



## 2 CLEANING AND DISINFECTION

### 2.1 • Wall mounted UV Light:

• **UV-DIRECT LIGHT** allows deep disinfection of air and surfaces in any type of food or medical environment. Traditional cleaning methods are often not sufficient to guarantee high levels of hygiene, which can only be achieved through the use of **UV-C** technology.

In fact, the environments where food and medicine are processed must be sanitized to maintain the high hygiene and quality standards typical of this sector.

With **UV-DIRECT LIGHT**, it is possible to carry out the disinfection of production, packaging, storage areas, etc. in a simple, immediate and safe way, without developing heat, without using liquids and chemicals and without any contraindications.

**UV-DIRECT LIGHT** is equipped with a **UV-C lamp**, and it is applied as a common fixing to the ceiling. The device can be switched on during work breaks, always when the staff is not present, so that it irradiates the surfaces, which are then disinfected. In just a few minutes of operation.

The high levels of disinfection of **UV-DIRECT LIGHT** can be achieved.

#### Technical Data

- Stainless steel **304**
- 254 nm wave length.
- Irradiance : 34 mJ/cm<sup>2</sup>
- Does not produce ozone or other secondary contaminants.
- 220V/230V 60 Hz.
- 40W (eight lamps 40W).



**HSML001**



## 2 CLEANING AND DISINFECTION

### 2.2

#### •UV-Disinfection cabinet:

•**UV-CABINET** preserves the hygiene of tools, containers and of any type of equipment in the food and medical sector.

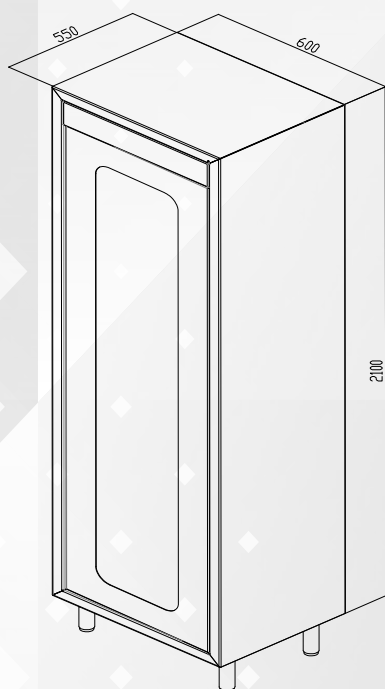
With **UV-CABINET**, it is possible to perform the disinfection of equipment and tools in a simple, immediate and safe way, without developing heat, without using liquids and without any contraindications.

The cabinet is equipped with different **UV-C lamps**, positioned uniformly in order to radiate all surfaces to be disinfected and without any shadows. Moreover, the internal reflection increases the irradiation power, managing to significantly lower the exposure time required to achieve the disinfection level of **%99.9**.

The use of the **UV-CABINET** is indicated when it is required to preserve the sterility of the tools, even hours after washing, so that they can be used safely during operations. It is shown how, in the food industry, an increased in hygiene level allows a consequent and general product quality increase and, more specifically, the storage of materials inside the **UV-CABINET** achieves the elimination (**%99**) of bacteria.

#### Technical Data

- Stainless steel **304**
- 254 nm wave length.
- Irradiance : .34 mJ/cm2
- Does not produce ozone or other secondary contaminants.
- 220 V/230V 60 Hz.
- 200W (eight lamps 40W).


**HSDC002**




## 2

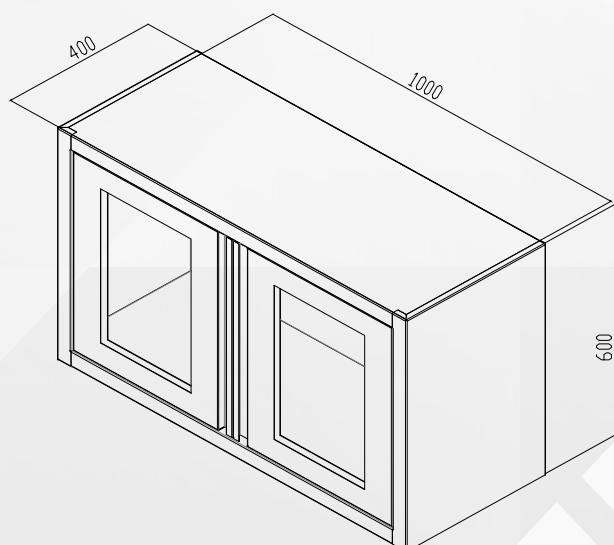
## CLEANING AND DISINFECTION

## 2.3

## •Wall UV-Disinfection cabinet:

## Technical Data

- Stainless steel **304**
- 254 nm wave length.
- Irradiance : 34 mJ/cm2
- Does not produce ozone or other secondary contaminants.
- 220V/230V 60 Hz
- 80W (eight lamps 40W).



HSWDC03



## 2

## CLEANING AND DISINFECTION

## 2.4

### •UV Hight power disinfection system mobile:

•The **UVC** mobile device is ideal when very fast **UVC** disinfection times are needed for small or medium areas, including patient care environments, operating suites, nursing homes, emergency shelters, large exercise facilities, gymnasiums, meeting rooms, manufacturing facilities, and prisons / jail cells.

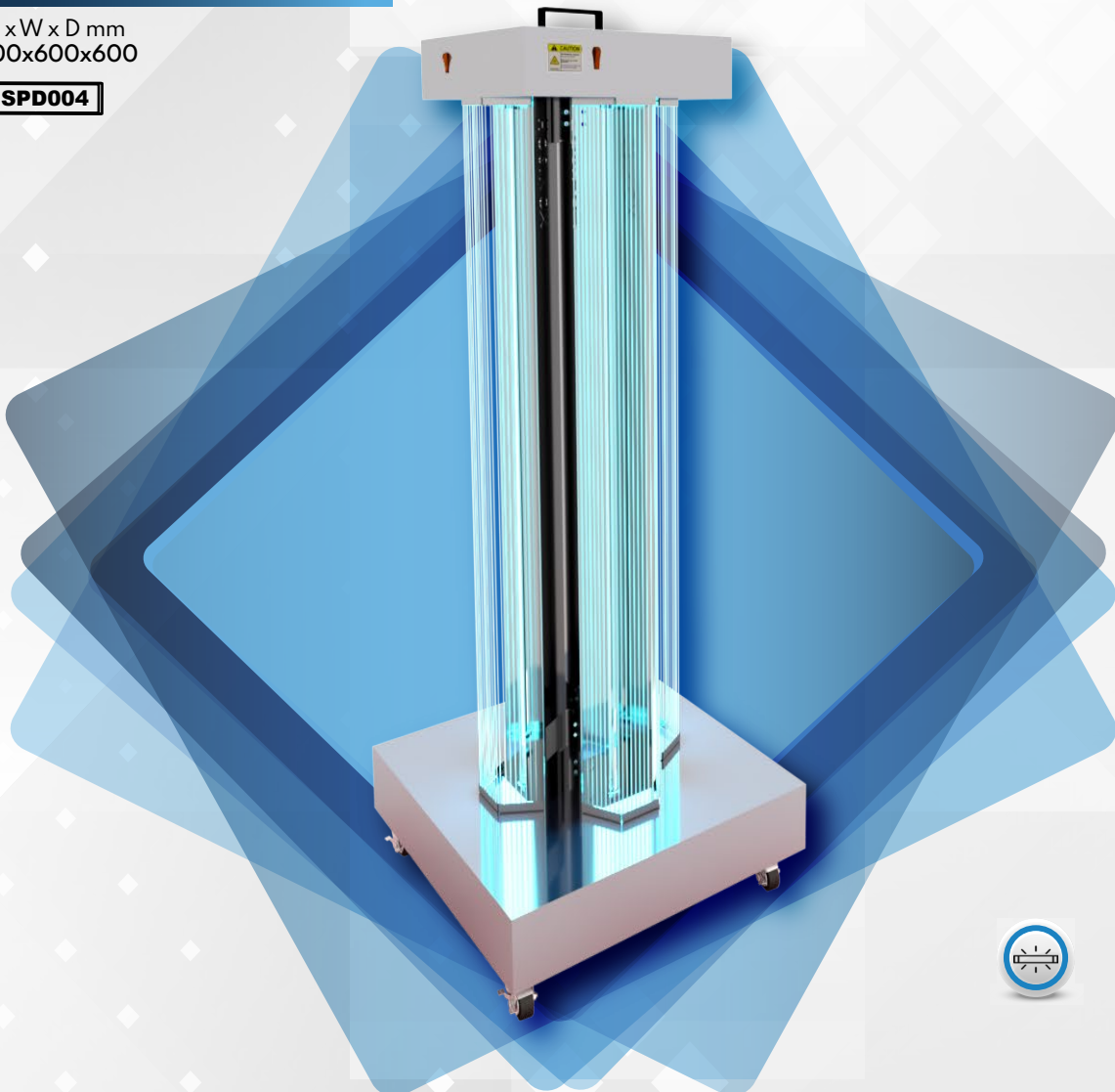
The **UVC** mobile is designed to accommodate all environmental service applications, and due to its user-friendly design, can be found "in all spaces."

#### Technical Data

- Stainless steel **304**
- This unit uses -360degree.
- 4 UVC lamps.
- 254 nm wave length.
- Irradiance : 34 mJ/cm2.
- Does not produce ozone or other secondary contaminants.
- 220 V/230V 60 Hz.
- 160W (eight lamps 40W).

#### Dimensions

- H x W x D mm  
1700x600x600

**HSPD004**

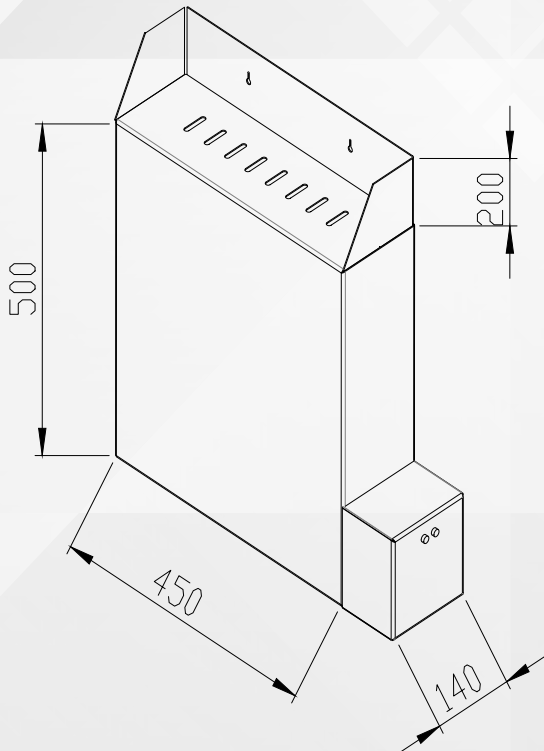
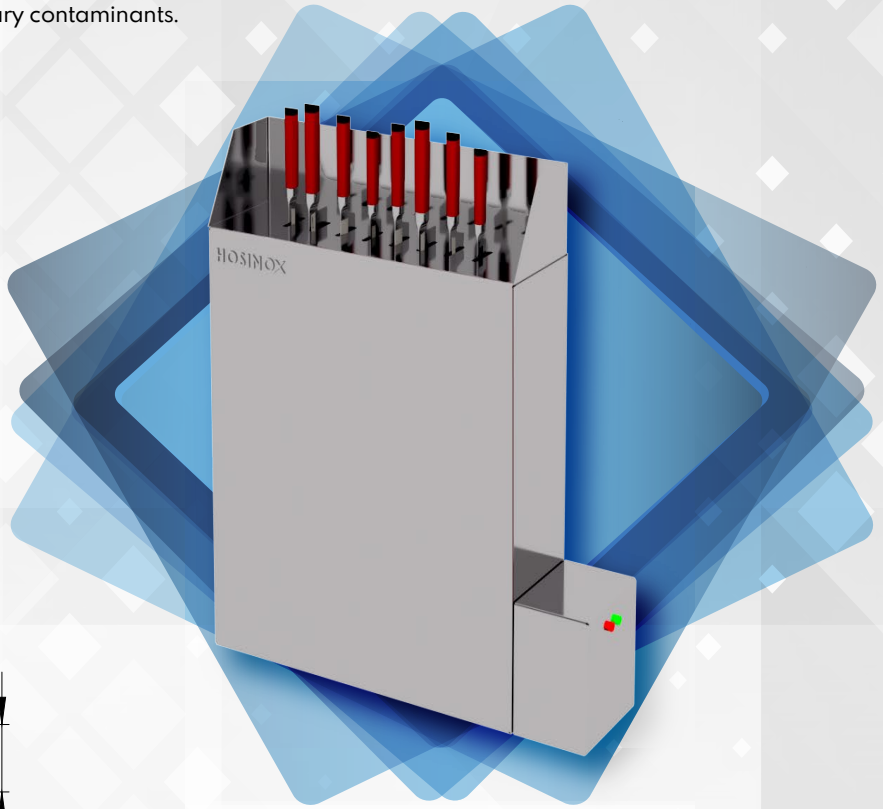
## 2 CLEANING AND DISINFECTION

### 2.5 •UV Knife sterilizer cabinet:

- Knives sterilization by using UV Light.
- Stainless steel casing.
- Power supply : 240 V - 50 Hz.
- 15 W UV Lamp (to be changed once a year).
- Adjustable timer from 0 to 120 minutes.

#### Technical Data

- Stainless steel **304**
- 254 nm wave length.
- Irradiance : .34 mJ/cm2.
- Does not produce ozone or other secondary contaminants.
- 220 V/230V 60 Hz
- 40W (eight lamps 40W).
- Timer: 0-120s.
- Knives capacity:8.


**HSKC005**






## 2

## CLEANING AND DISINFECTION

### •UVC safety information:

- Excessive exposure to **UVC** can cause adverse effects on the eyes, retina, skin, the circadian system, and the immune system.
- Human overexposure causes temporary skin redness and harsh eye irritation.
- Symptoms may take 4 to 24 hours to occur after exposure.



### •WARNING:

•To guard against damage observe basic safety precautions including wear protective gear when operating and handling the unit including goggles, gloves, and face shields. Read and follow all instructions, warnings, and safety notices instructions.

•Do not expose eyes and skin to direct or reflected **UVC** rays as they are harmful.

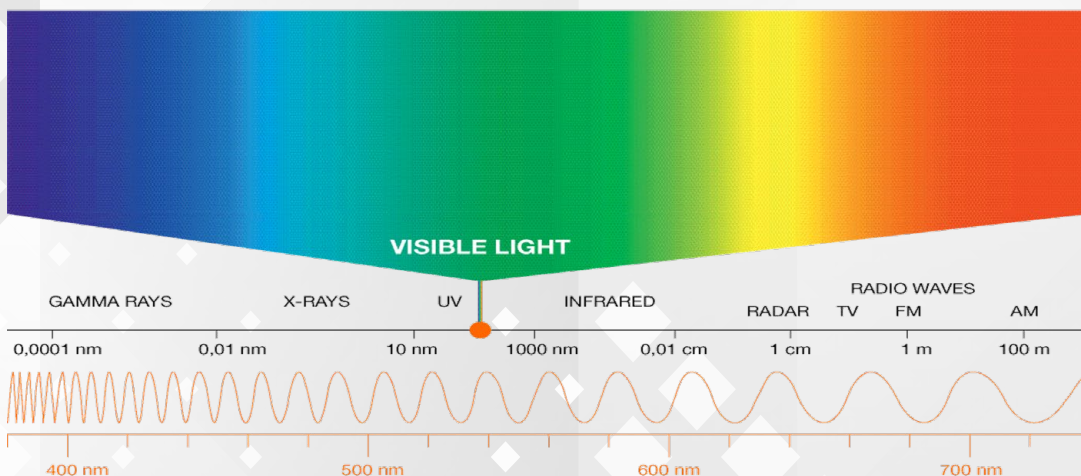
### Do

- Protect your eyes.
- Use protective **PPE** gear.
- Establish a plan to disinfect the area.
- Use safety timers.
- Train personnel in using **UV-Disinfecting** system.
- Use hazard warning signs when in use.
- Keep fixture in a protective case.

### Don't

- Don't expose eyes & skin to **UVC**.
- Don't allow anyone to operate.
- UV-C** system without reading safety instructions.
- Don't allow anyone into the area.
- Being treated with **UV-C. UV-Disinfecting** system.
- Don't touch the **UV-C** lamps while operating.

### THE ELECTROMAGNETIC SPECTRUM





## 2

## CLEANING AND DISINFECTION

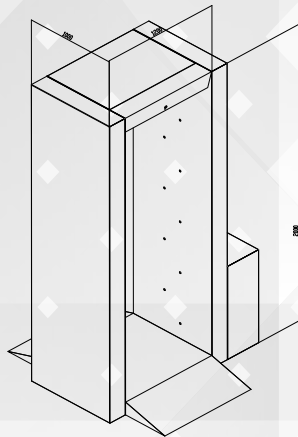
## 2.6

## • Intelligent disinfection door:

- A human disinfection door can be intelligently disinfected by connecting with an infrared sensor.
- The intelligent disinfection door can be easily installed and used to spray the disinfection for people passing through the entrance.
- The operation of the equipment is intelligently controlled, without special personnel control.

## Technical Data

- Stainless steel **304**
- 220 V/230V 60 Hz.
- 800W.
- Work Time 24 Hour/Timer/Sensor.
- Equipment Noise Below 35db.
- Material Thickness 1MM.
- Disinfection method : Ozone plasma generator + UV + Disinfectant spraying.
- Disinfectant dose 2.8L/Hour
- Disinfection control mode  
Sensor + Timing control + manual opening.

**HSID001**

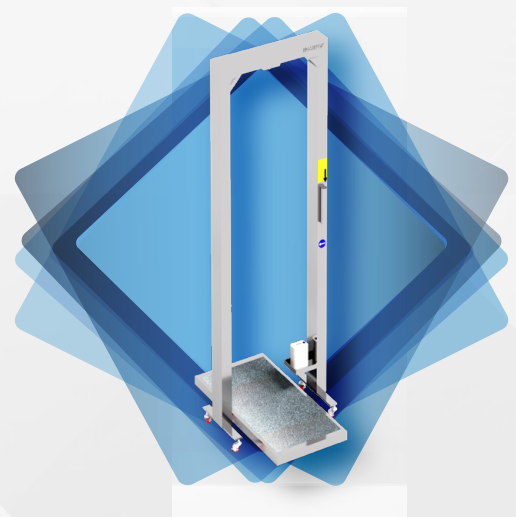
## 2.7

## • Small intelligent disinfection door:

- A human disinfection door can be intelligently disinfected by connecting with an infrared sensor.
- The intelligent disinfection door can be easily installed and used to spray the disinfection for people passing through the entrance.
- The operation of the equipment is intelligently controlled, without special personnel control.

## Technical Data

- Stainless steel **304**
- 220 V/230V 60 Hz
- 800W
- Work Time 24 Hour/Timer/Sensor
- Equipment Noise Below 35db
- Material Thickness 1MM
- Disinfection method : Ozone plasma generator + UV + Disinfectant spraying
- Disinfectant dose 2.8L/Hour
- Disinfection control mode  
Sensor + Timing control + manual opening.

**HSSID02**





## 2 CLEANING AND DISINFECTION

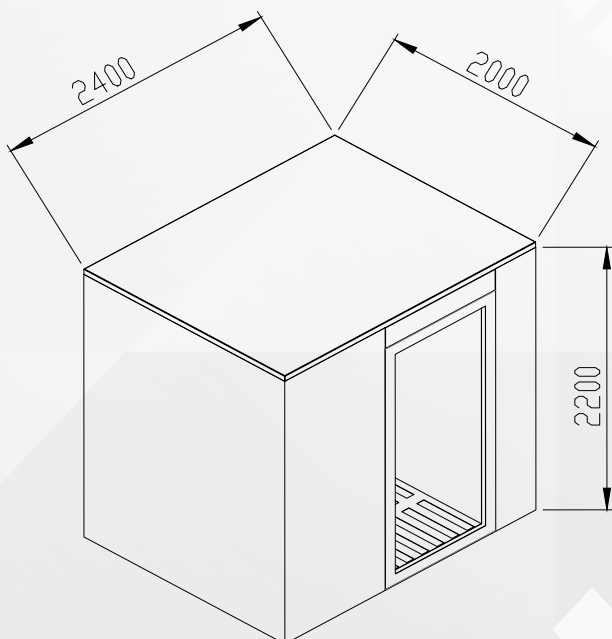
2.8

### • Room disinfection cabinet:

• For this the washing cabinet is an effective solution to improve the efficiency and economy of a power plant of sterilization.

#### Technical Data

- Stainless steel **304**
- Electric connection : 220V or 230V /60Hz for Single Phase. 380V or 400V /60Hz for 3 Phase.
- Water outlet DN50
- Brush length : Ozone plasma. generator + UV + Disinfectant spraying.
- Disinfectant dose **2.8L/Hour**.
- Disinfection control mode  
Sensor + Timing control + manual opening.

**HSRC100**



## 2

## CLEANING AND DISINFECTION

## 2.9

## •Boot cleaner:

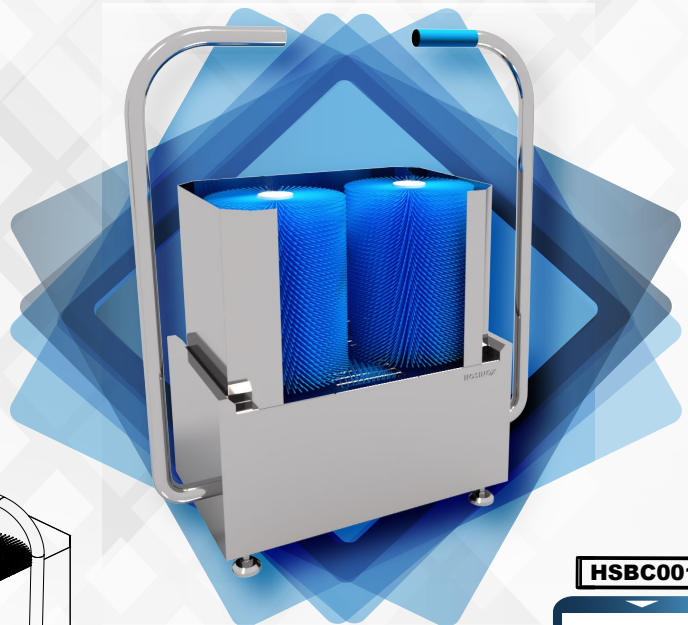
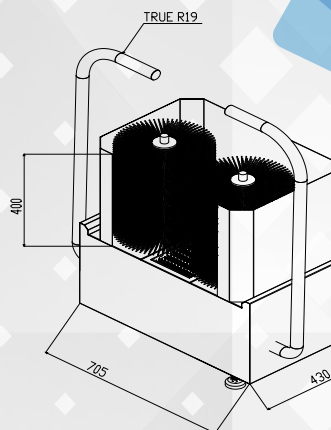
- The boot cleaning machine enables a cleaning of the boot legs and soles.
- The side handrail and an additional handle, in which the stainless steel button that activates the brush rotation is integrated, ensures a safe hold when passing through the machine.
- The brushes are easy to wash and can be removed without the use of tools.

## Technical Data

- Stainless steel **304**
- Electric connection 220v/230v.
- Mains supply 60-50 Hz.
- Power 0.75 kW.
- Water connection 4/3"MW.
- Water outlet DN50.
- Brush length 300mm.

## Options

- Without Sole Cleaning (only boots legs).



HSBC001



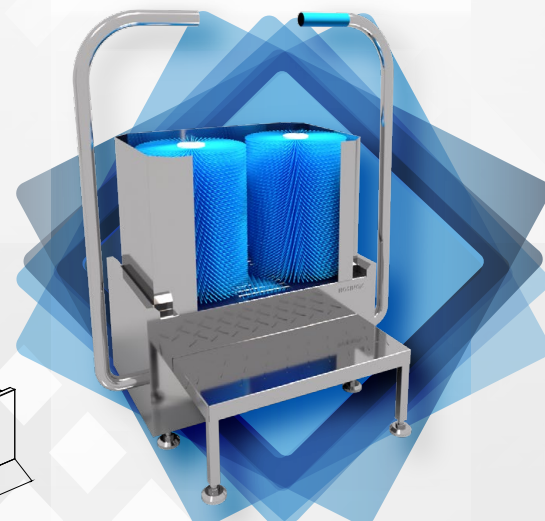
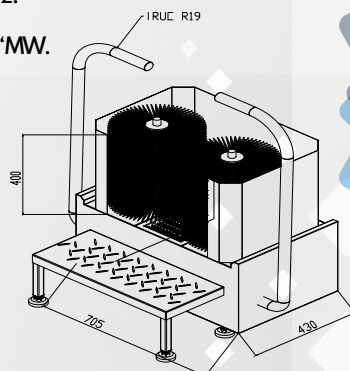
## 2.10

## •Boot cleaner with stair:

- The boot cleaning machine enables a cleaning of the boot legs and soles.
- The side handrail and an additional handle, in which the stainless steel button that activates the brush rotation is integrated, ensures a safe hold when passing through the machine.
- The brushes are easy to wash and can be removed without the use of tools.

## Technical Data

- Stainless steel **304**
- Electric connection 220v/230v.
- Mains supply 60-50 Hz.
- Power 0.75 kW.
- Water connection 4/3"MW.
- Water outlet DN50
- Brush length 300mm.



HSBCS02



## 2 CLEANING AND DISINFECTION

### 2.11 • Walk-through boot cleaner:

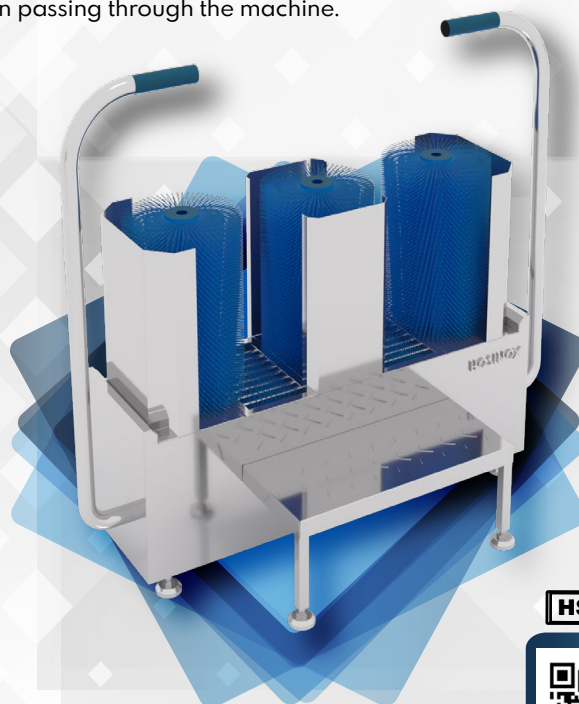
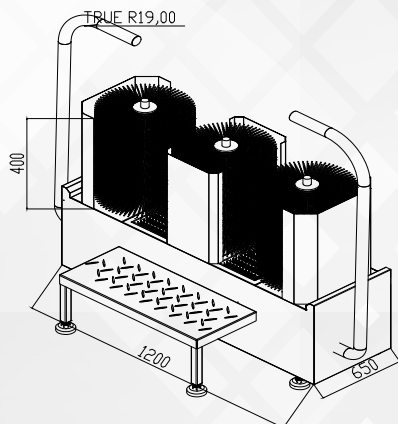
- The walk-through boot cleaning machine enables a quick and thorough cleaning of the boot legs and soles of a great number of people in a short amount of time.
- The side handrail and an additional handle, in which the stainless steel button that activates the brush rotation is integrated, ensures a safe hold when passing through the machine.

#### Technical Data

- Stainless steel **304**
- Electric connection 220v/230v.
- Mains supply 60-50 Hz.
- Power 0.75 kW.
- Water connection 4/3"MW.
- Water outlet DN50.
- Brush length 300mm.

#### Options

- Without Sole Cleaning (only boots legs).
- In combination with Compact-Hygiene stationipsum

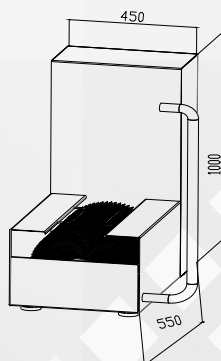

**HSWB003**


### 2.12 • Sole cleaner:

- For cleaning the soles.
- Hygienic-Design.
- Horizontal brush roller with water flow.
- Brush roll removable without tool.
- Brush roller rotation by means of hand sensor.

#### Technical Data

- Stainless steel **304**
- Electric connection 220v/230v.
- Mains supply 60-50 Hz.
- Power 0.75 kW.
- Water connection 4/3"MW.
- Water outlet DN50.
- Brush length 300mm.


**HSSC004**


## 2

## CLEANING AND DISINFECTION

2.13

## •Pass-through sole cleaning station:

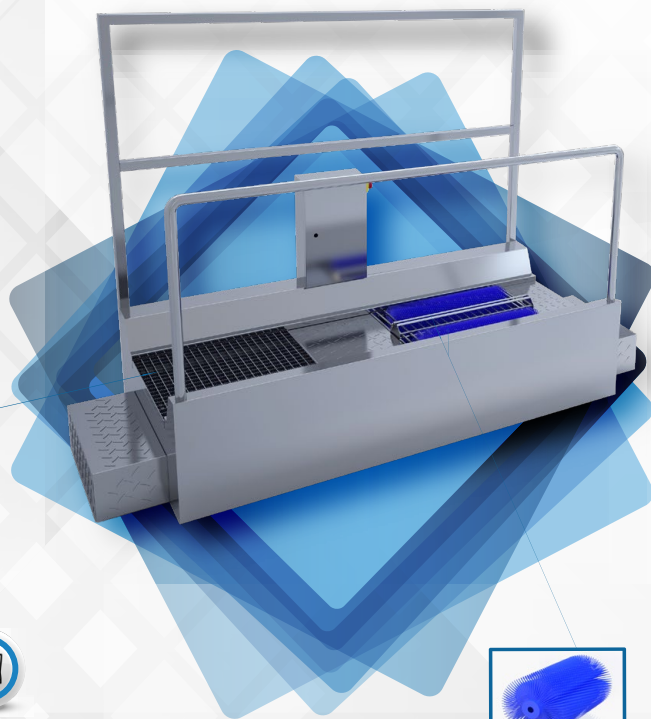
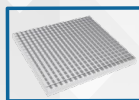
- The motors of the rotating brushes and water.
- Supplies are activated by stepping onto the station and stop immediately after leaving the grid.

## Technical Data

- Stainless steel **304**
- Electric connection 220v/230v.
- Mains supply 60-50 Hz.
- Power 0.75 kW.
- Water connection 4/3"MW.
- Water outlet DN50.
- Brush length 300mm.

## Options

- Activation via photo sensors.
- The unit is bi-directional ( accessible from Both directions )

**HSPTS05**

## •Pass-through sole cleaning station:

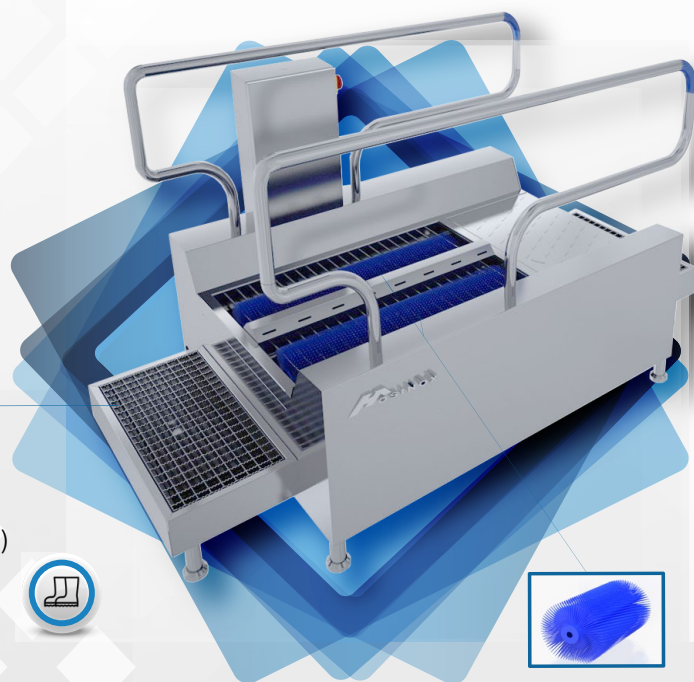
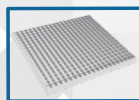
- The motors of the rotating brushes and water.
- Supplies are activated by stepping onto the station and stop immediately after leaving the grid.

## Technical Data

- Stainless steel **304**
- Material : stainless steel.
- Power: 220V or 230V /60Hz for Single Phase.
- 380V or 400V /60Hz for 3 Phase.
- Control voltage : 24 V DC.
- Stainless steel control box :
- mounted accessibly onto the unit.
- Water inlet : 2/1".
- Water outlet : DN50.
- For on-floor.

## Options

- Activation via photo sensors.
- The unit is bi-directional ( accessible from Both directions )

**HSPTS05**



## 2 CLEANING AND DISINFECTION

### 2.14 •Pass-through sole cleaning with boot cleaner:

- The motors of the rotating brushes and water.
- Supplies are activated by stepping onto the station and stop immediately after leaving the grid.

#### Technical Data

- Stainless steel **304**
- Power: 220V or 230V /60Hz for Single Phase.  
380V or 400V /60Hz for 3 Phase..
- Control voltage : 24 V DC.
- Stainless steel control box :
- mounted accessibly onto the unit.
- Water inlet : 2/1".
- Water outlet : DN50.
- For on-floor.

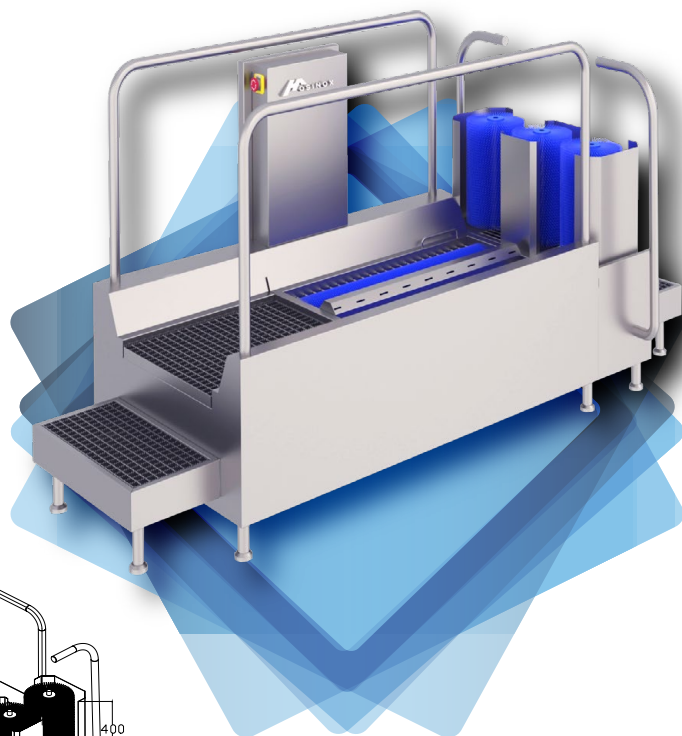
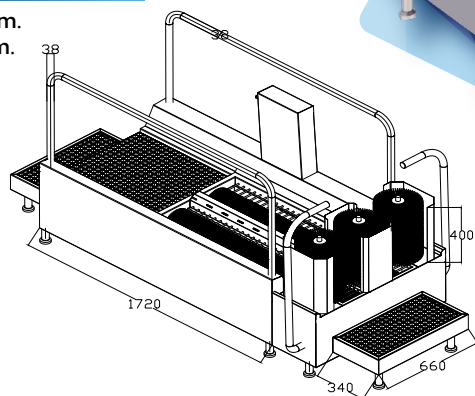
#### Options

- Activation via photo sensors.
- The unit is bi-directional ( accessible from Both directions )

#### Options

- Shoe cleaning: 2 x600 mm.
- Shaft brushes: 3 x 300 mm.

**HSPTSB6**



### •Pass-through sole cleaning with boot cleaner:

#### Technical Data

- Stainless steel **304**
- Power: 220V or 230V /60Hz for Single Phase.  
380V or 400V /60Hz for 3 Phase..
- Control voltage : 24 V DC.
- Stainless steel control box :
- mounted accessibly onto the unit.
- Water inlet : 2/1".
- Water outlet : DN50.
- For on-floor.

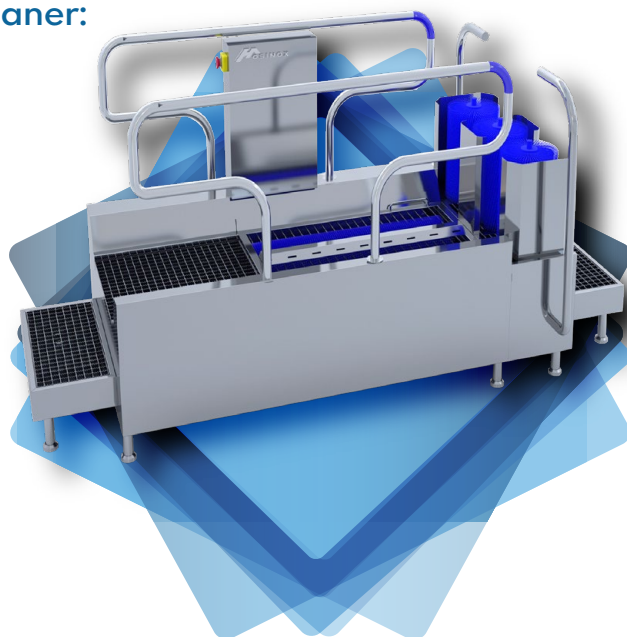
#### Options

- Activation via photo sensors.
- The unit is bi-directional ( accessible from Both directions )

#### Options

- Shoe cleaning: 2 x600 mm.
- Shaft brushes: 3 x 300 mm.

**HSPTSB6**





## 2

## CLEANING AND DISINFECTION

2.15

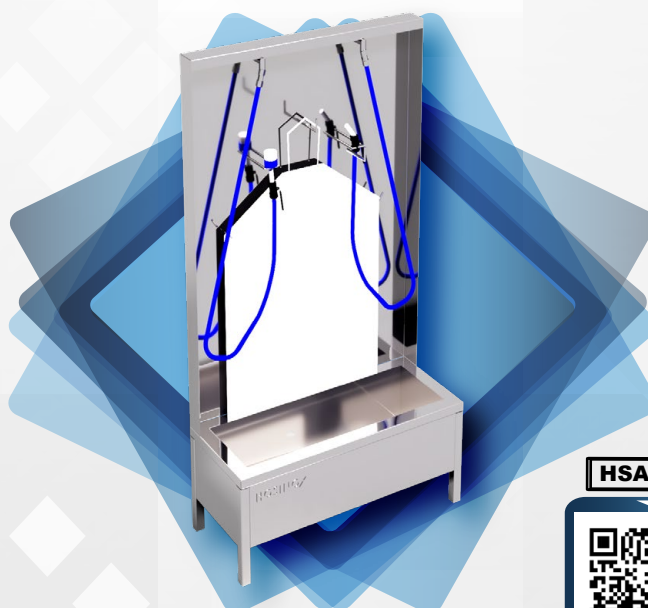
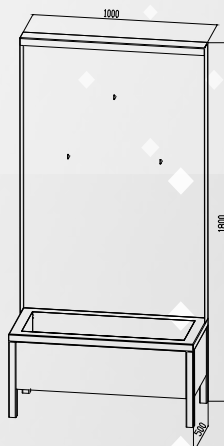
## •Apron cleaning:

- Stainless steel **304**
- For cleaning the apron.
- Manual cleaning of the apron.
- Robust and functional design.
- Water-flown hand brush.
- Height-adjustable legs.

**HSAC200**

## •Apron cleaning:

- Stainless steel **304**
- For cleaning the apron.
- Manual cleaning of the apron.
- Robust and functional design.
- Water-flown hand brush.
- Height-adjustable legs.

**HSAC200**

## 2 CLEANING AND DISINFECTION

2.16

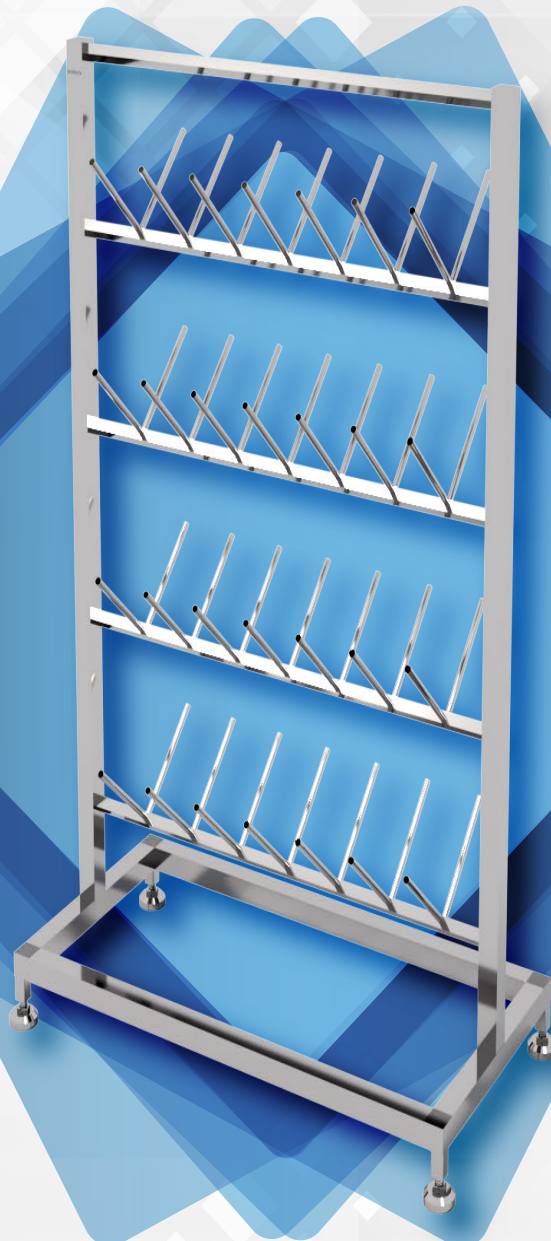
### • Boot and shoe support:

- The Manual boot dryers or shoe dryers made of stainless steel are designed to dry.
- Shoes in the open air boots and rubber boots of your workforce after use and to store them safely.

- Hygienic design.
- Robust design.
- Manufactured in stainless steel **304**
- 28 pair of shoes.

#### Dimension

- WxDxH(mm)
- 1000x500x120

**HSSBS07**

## 2

## CLEANING AND DISINFECTION

## 2.17

### •Electric boot and shoe dryer:

•The electric boot dryers or shoe dryers made of stainless steel are designed to dry the shoes, boots and rubber boots of your workforce after use and to store them safely.

- Hygienic design.
- Robust design.
- High quality components
- Low maintenance.
- Reduces bacterial contamination.
- Manufactured in stainless steel **304**
- 35 pair of shoes.

#### Dimension

- WxDxH(mm)
- 1000x500x1400

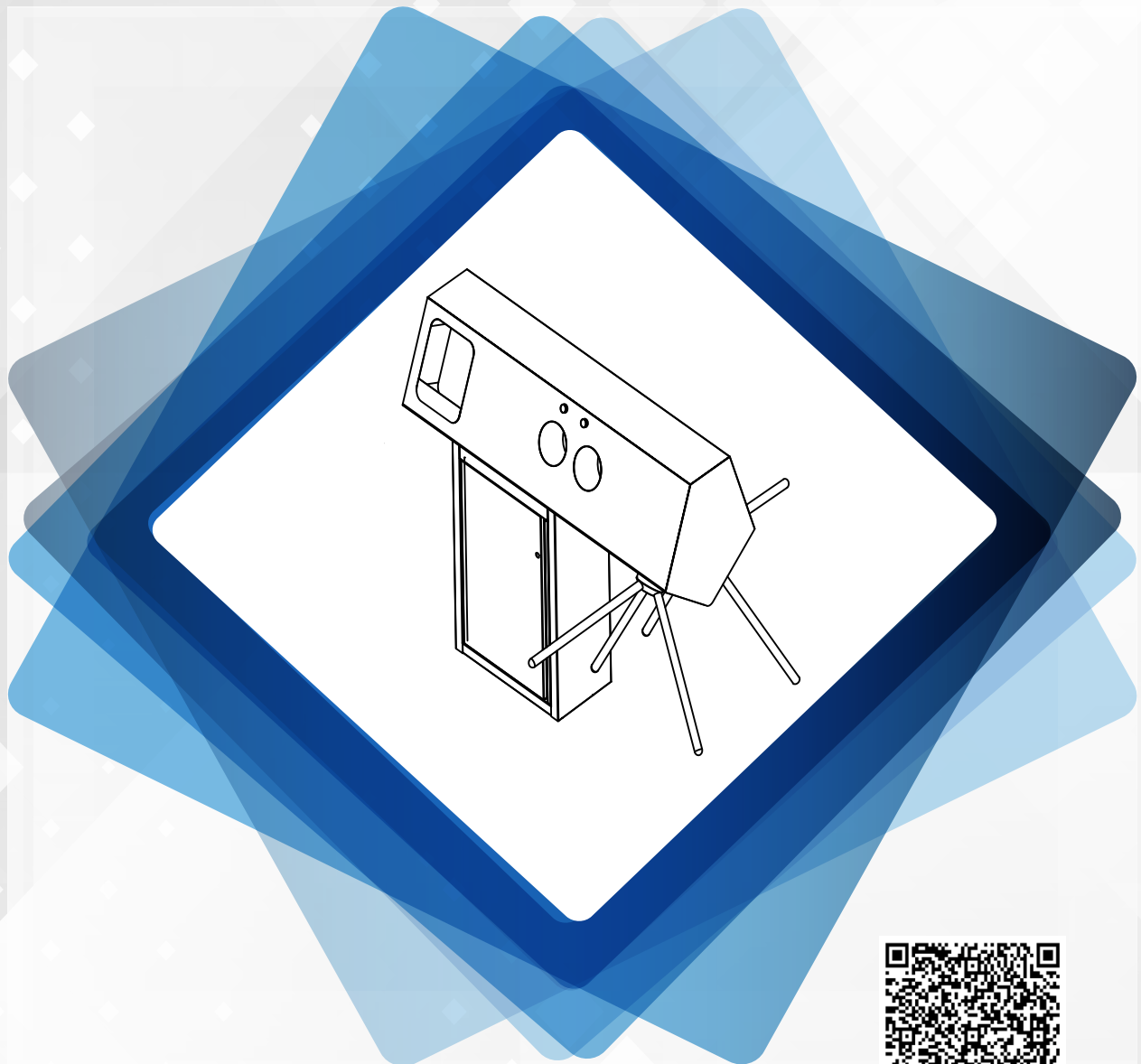
**HSEBSD8**

**3**

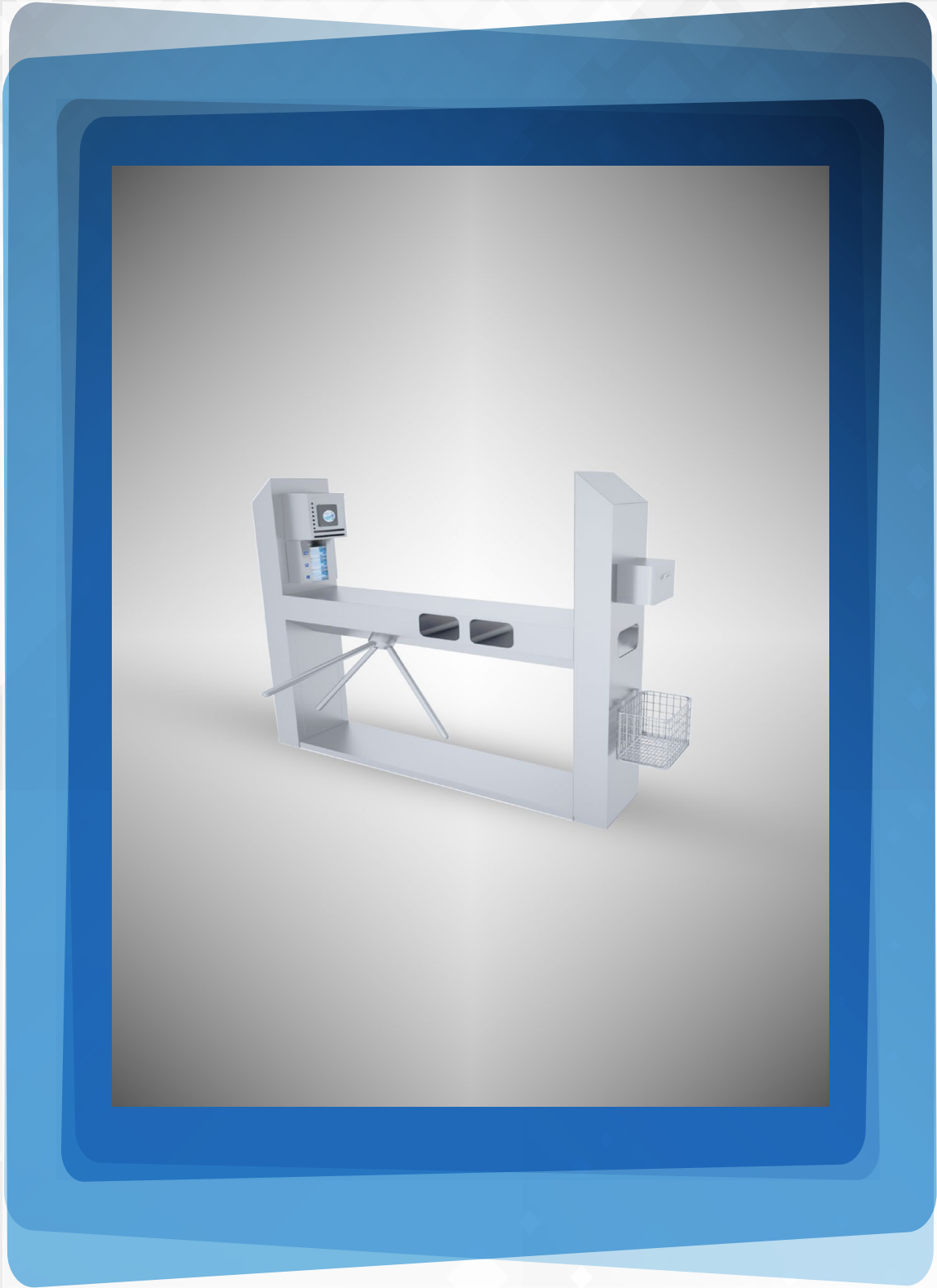
# ACCESS CONTROL WITH HAND DISINFECTION

HOSINOX COMPANY |      

















HOSINOX COMPANY |       





## ACCESS CONTROL WITH HAND DISINFECTION p.33

-  Single wall mounted access control with hand disinfection: p.37
-  Double wall mounted access control with hand disinfection: p.37
-  Square wall mounted access control with hand disinfection: p.37
-  Wall mounted access control with hand disinfection and wash sink with dryer: p.38
-  Single access control with hand disinfection and cabinet: p.39
-  Square access control with hand disinfection and cabinet: p.39
-  Double control with hand disinfection with cabinet: p.39
-  Access control with hand disinfection, hand wash sink, dryer and cabinet: p.40
-  Double access control with two hand disinfection, two hand wash sink and two dryer: p.41
-  Access control with hand disinfection: p.42
-  Double access control with hand disinfection: p.43
-  Access control with hand disinfection, hand wash sink, dryer, glove dispenser and tinsel dispenser: p.44





### 3 ACCESS CONTROL WITH HAND DISINFECTION

#### 3.1 • Single wall mounted access control with hand disinfection:

- Stainless steel Hygienic-Design version.
- Supplies are activated by stepping onto the station and stop immediately after leaving the grid.

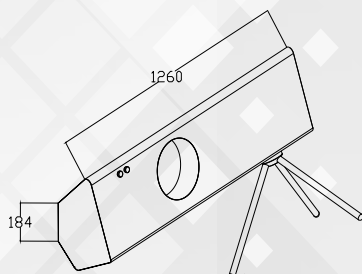
##### Technical Data

- Stainless steel **304**
- Mains supply 220 V; 60-50 Hz
- Sensor 24 VDC
- Power 0.2 kW

##### Options

- Hookable version.
- Right-hand version.
- Left-hand version.
- Disinfection box shape.

**HSSWAX1**



#### 3.2 • Double wall mounted access control with hand disinfection:

- Stainless steel Hygienic-Design version.
- Supplies are activated by stepping onto the station and stop immediately after leaving the grid.

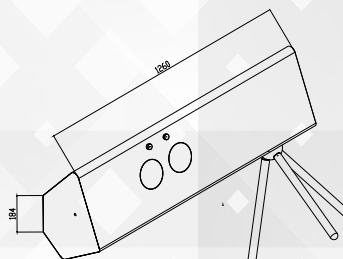
##### Technical Data

- Stainless steel **304**
- Mains supply 220 V; 60-50 Hz
- Sensor 24 VDC
- Power 0.2 kW

##### Options

- Hookable version.
- Right-hand version.
- Left-hand version.
- Disinfection box shape.

**HSDWAX2**



#### 3.3 • Square wall mounted access control with hand disinfection:

- Stainless steel Hygienic-Design version.
- Supplies are activated by stepping onto the station and stop immediately after leaving the grid.

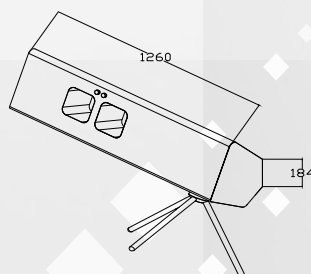
##### Technical Data

- Stainless steel **304**
- Mains supply 220 V; 60-50 Hz
- Sensor 24 VDC
- Power 0.2 kW

##### Options

- Hookable version.
- Right-hand version.
- Left-hand version.
- Disinfection box shape.

**HSXWAX3**







3

## ACCESS CONTROL WITH HAND DISINFECTION

3.4

### •Wall mounted access control with hand disinfection and wash sink with dryer:

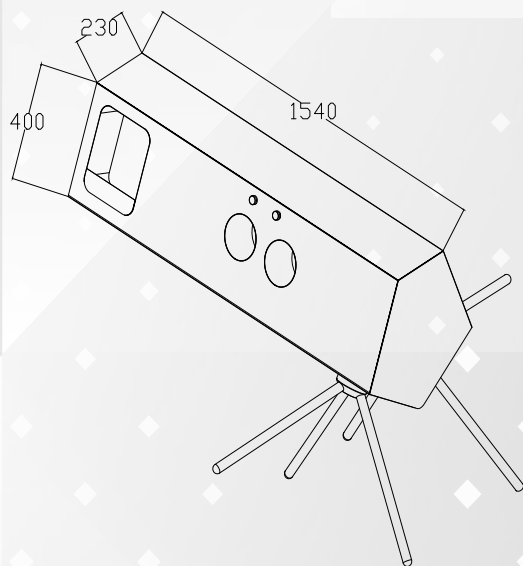
- Stainless steel Hygienic-Design version.
- Person separation approval after terminated medium application only.

#### Technical Data

- Stainless steel **304**
- Mains supply 220 V; 60-50 Hz
- Sensor 24 VDC
- Dryer power 1800w
- Solenoid valve 24vDC 2/1"
- Gel pump 28w
- Water outlet: DN50

#### Options

- Hookable version.
- Right-hand version.
- Left-hand version.
- Disinfection box shape.

**HSWAS01**


### 3 ACCESS CONTROL WITH HAND DISINFECTION

#### 3.5 • Single access control with hand disinfection and cabinet:

- Stainless steel Hygienic-Design version with hanged door cabinet.
- Person separation approval after terminated medium application only.

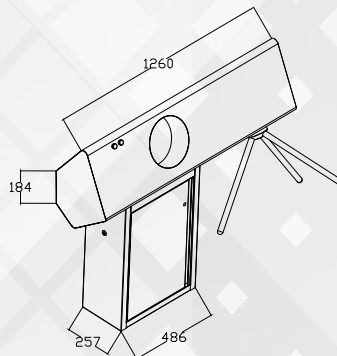
##### Technical Data

- Stainless steel **304**
- Mains supply 220 V; 60-50 Hz
- Sensor 24 VDC

##### Options

- Right-hand version.
- Left-hand version.
- Disinfection box shape.

**HSSAC01**



#### 3.6 • Square access control with hand disinfection and cabinet:

- Stainless steel Hygienic-Design version with hanged door cabinet.
- Person separation approval after terminated medium application only.

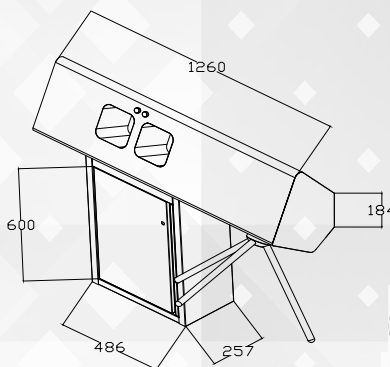
##### Technical Data

- Stainless steel **304**
- Mains supply 220 V; 60-50 Hz
- Sensor 24 VDC

##### Options

- Right-hand version.
- Left-hand version.
- Disinfection box shape.

**HSXDC03**



#### 3.7 • Double control with hand disinfection with cabinet:

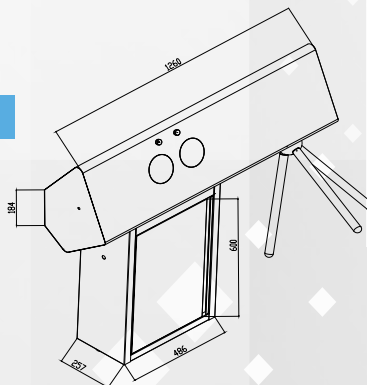
- Stainless steel Hygienic-Design version with hanged door cabinet.
- Person separation approval after terminated medium application only.

##### Technical Data

- Stainless steel **304**
- Mains supply 220 V; 60-50 Hz
- Sensor 24 VDC

##### Options

- Right-hand version.
- Left-hand version.
- Disinfection box shape.



**HSDAC02**



3

## ACCESS CONTROL WITH HAND DISINFECTION

3.8

### • Access control with hand disinfection, hand wash sink, dryer and cabinet:

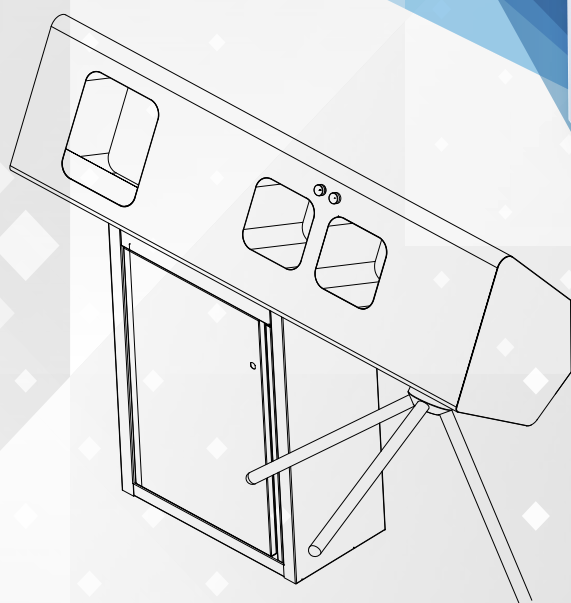
- Stainless steel Hygienic-Design version.
- Cabinet model with hanged door.

#### Technical Data

- Stainless steel **304**
- Mains supply 220 V; 60-50 Hz.
- Sensor 24 VDC.
- Dryer power 1800w.
- Solenoid valve 24vDC 2/1".
- Gel pump 28w.
- Water outlet: DN50.
- emergency button.

#### Options

- Right-hand version
- Left-hand version



HSXSC02





3

## ACCESS CONTROL WITH HAND DISINFECTION

3.9

### • Double access control with two hand disinfection, two hand wash sink and two dryer:

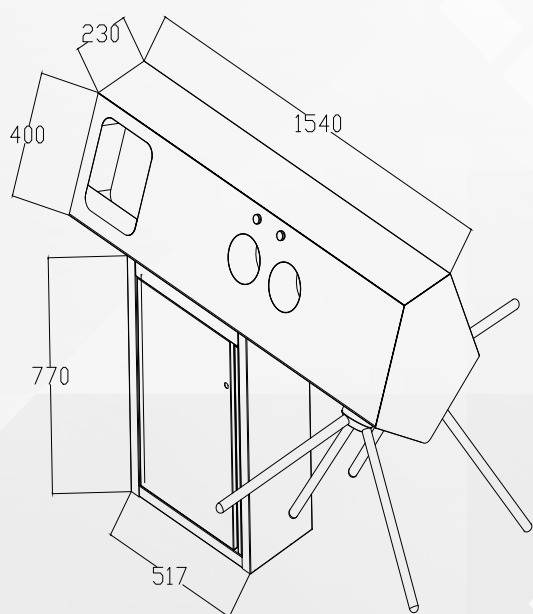
- Stainless steel Hygienic-Design version.
- Cabinet model with hanged door.

#### Technical Data

- Stainless steel **304**
- Mains supply 220 V; 60-50 Hz.
- Sensor 24 VDC.
- Dryer power 1800w.
- Solenoid valve 24vDC 2/1".
- Gel pump 28w.
- Water outlet: DN50.
- emergency button.

#### Options

- Right-hand version
- Left-hand version

**HSRC100**






## ACCESS CONTROL WITH HAND DISINFECTION

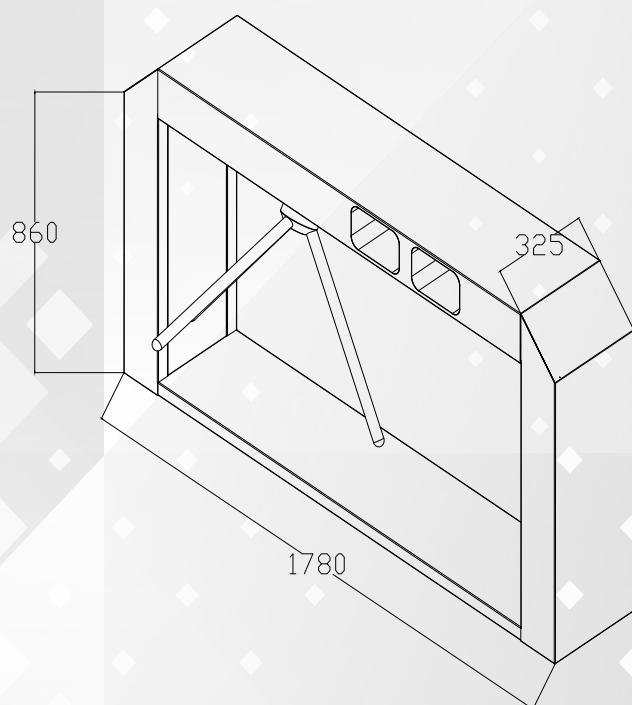
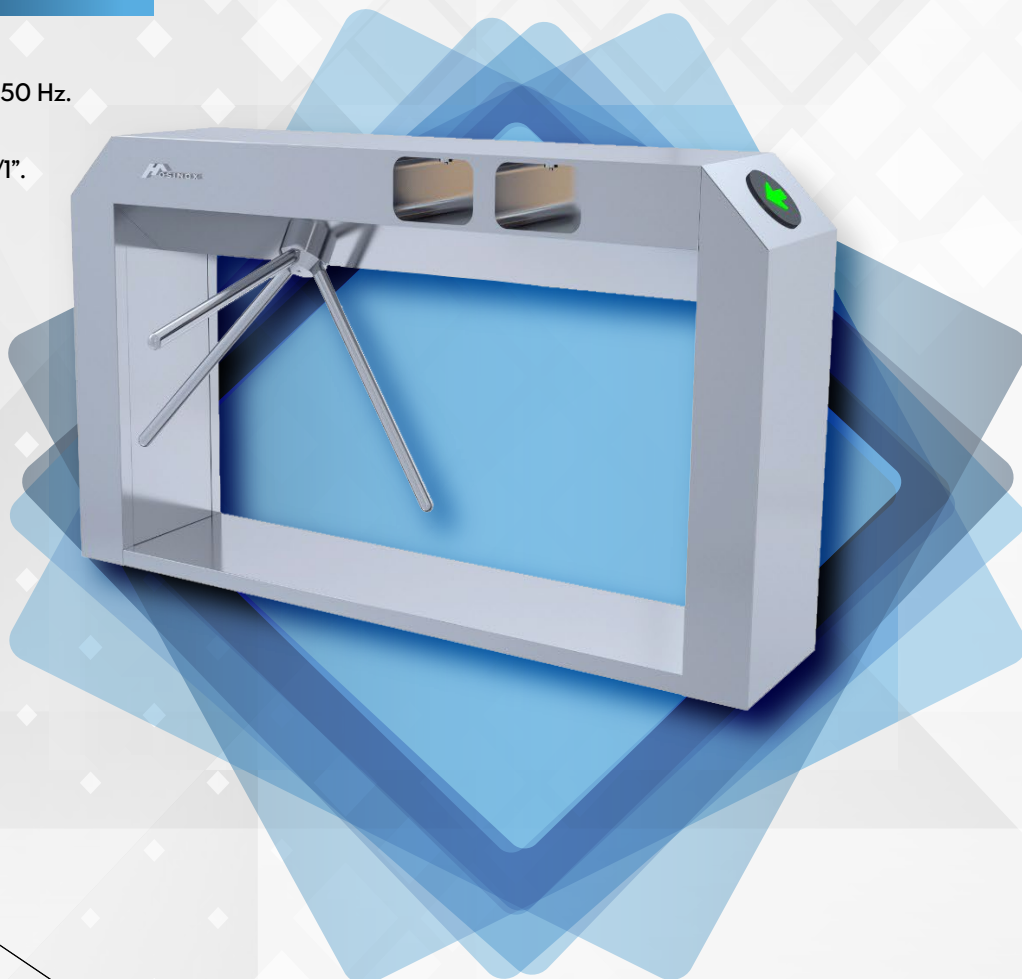


### • Access control with hand disinfection:

- Special refined and futuristic design which is characterized by simplicity.
- A minimalist model that can be used in building entrances: hospitals, laboratories, universities, industries....

#### Technical Data

- Stainless steel **304**
- Mains supply 220 V; 60-50 Hz.
- Sensor 24 VDC.
- Dryer power 1800w.
- Solenoid valve 24vDC 2/1".
- Gel pump 28w.
- Water outlet: DN50.
- emergency button.


**HSC1000**




3

## ACCESS CONTROL WITH HAND DISINFECTION

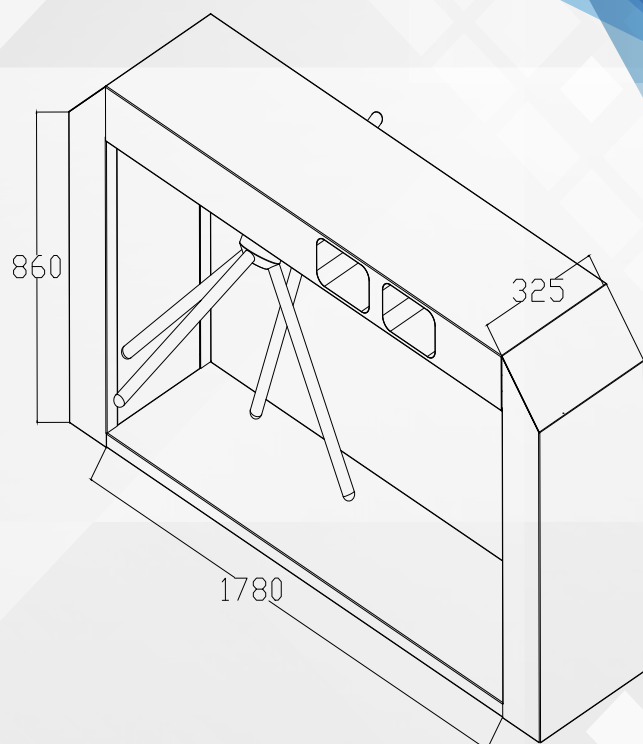
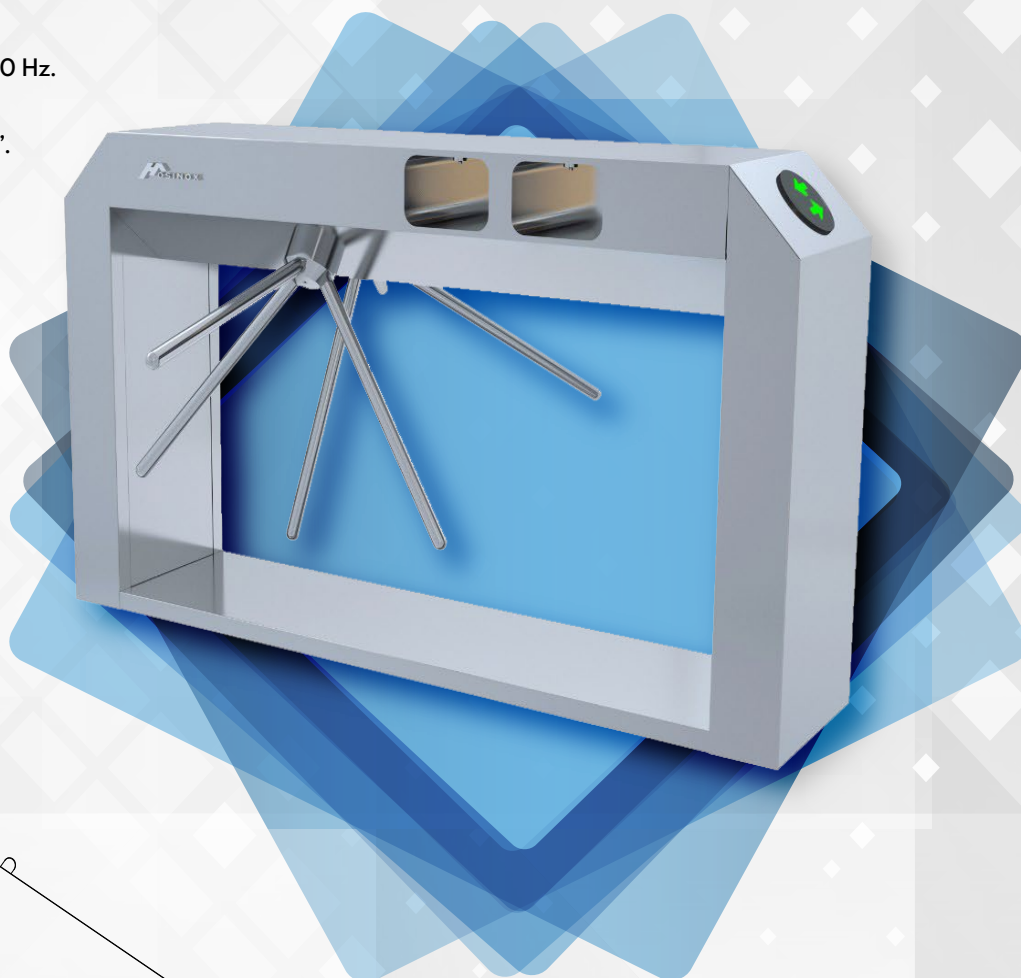
3.11

### • Double access control with hand disinfection:

- Special refined and futuristic design which is characterized by simplicity.
- A minimalist model that can be used in building entrances: hospitals, laboratories, universities, industries....

#### Technical Data

- Stainless steel **304**
- Mains supply 220 V; 60-50 Hz.
- Sensor 24 VDC.
- Dryer power 1800w.
- Solenoid valve 24vDC 2/1".
- Gel pump 28w.
- Water outlet: DN50.
- emergency button.

**HSC2000**

3

## ACCESS CONTROL WITH HAND DISINFECTION

3.12

### • Access control with hand disinfection, hand wash sink, dryer, glove dispenser and tinsel dispenser:

- Special refined and futuristic design which is characterized by simplicity.
- A minimalist model that can be used in building entrances: hospitals, laboratories, universities, industries....

#### Technical Data

- Stainless steel **304**
- Mains supply 220 V/230V; 60 Hz
- Sensor 24 VDC
- Dryer power 1800w
- Solenoid valve 24vDC 2/1"
- Gel pump 28w
- Water outlet: DN50

#### Options

- Right-hand version
- Left-hand version

**HSC1020**

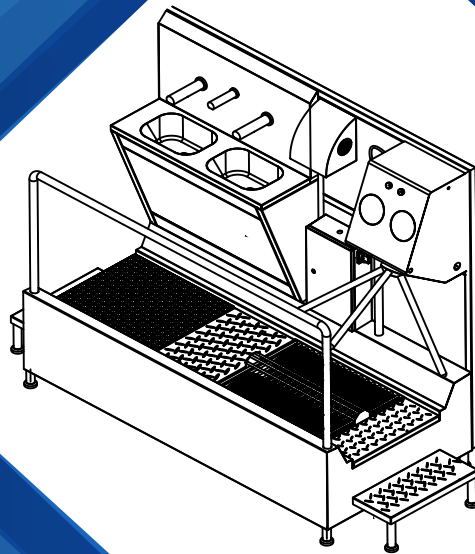


4

# HYGIENE STATION

HOSINOX COMPANY |      











HOSINOX COMPANY | 





## HYGIENE STATION

p.45

-  •Personalized hygiene station: p.49
-  •Hygiene station with access control, hand disinfection and grating sole: p.50
-  •Hygiene station with hand disinfection turnstile and sole cleaner: p.52
-  •Hygiene station with access control and double hand wash sink with pass through shoe cleaner with hand disinfection: p.54
-  •Hygiene station with hand disinfection turnstile sole and boot cleaner: p.56
-  •Hygiene station with hand disinfection, hand wash sink, hand dryer, turnstile sole and boot cleaner: p.58





## 4 HYGIENE STATION

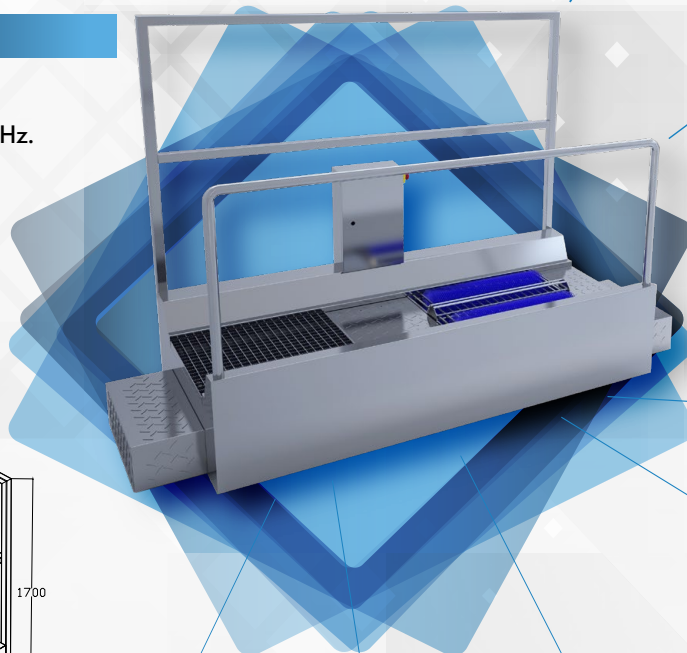
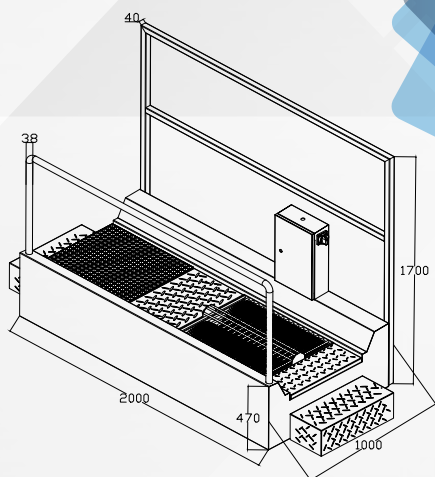
### 4.1 •Personalized hygiene station:

•You can just buy hygiene station with sole cleaner , you can add to it single or double sink, soap dispenser and dryer . And if you add to all this a hand disinfection with access control it become an hygiene station with access control, as a choice you can buy a tissue dispenser and garbage bin in the place of the dryer.

- 1 Pass through sole cleaner.
- 2 Hygiene station with single hand wash sink, soap dispenser, dryer and pass through sole cleaner.
- 3 Hygiene station with double hand wash sink, soap dispenser, dryer and pass through sole cleaner.
- 4 Hygiene station with access control, hand disinfection and pass through sole cleaner.
- 5 Hygiene station with access control, single or double hand wash sink, soap dispenser, dryer and pass through sole cleaner.

### Technical Data

- Stainless steel **304**
- Mains supply 220 V; 60-50 Hz.
- Sensor 24 VDC.
- Dryer power 1800w.
- Solenoid valve 24vDC 2/1".
- Gel pump 28w.
- Water outlet: DN50.
- emergency button.







4

## HYGIENE STATION

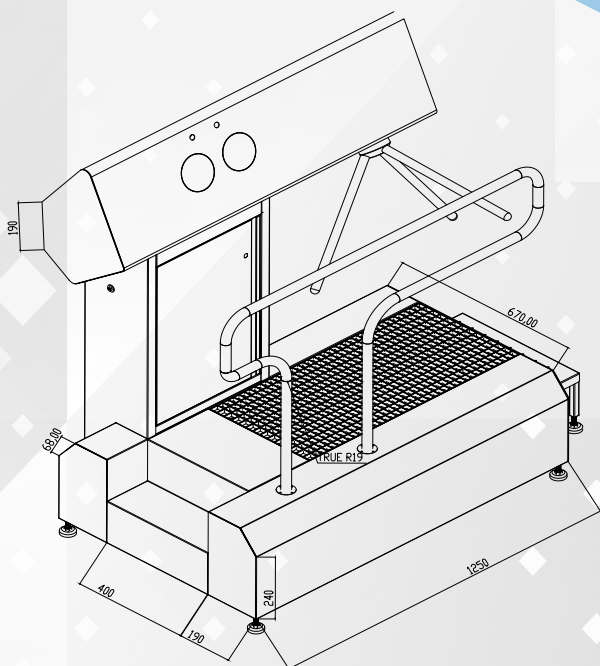
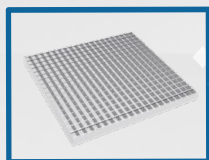
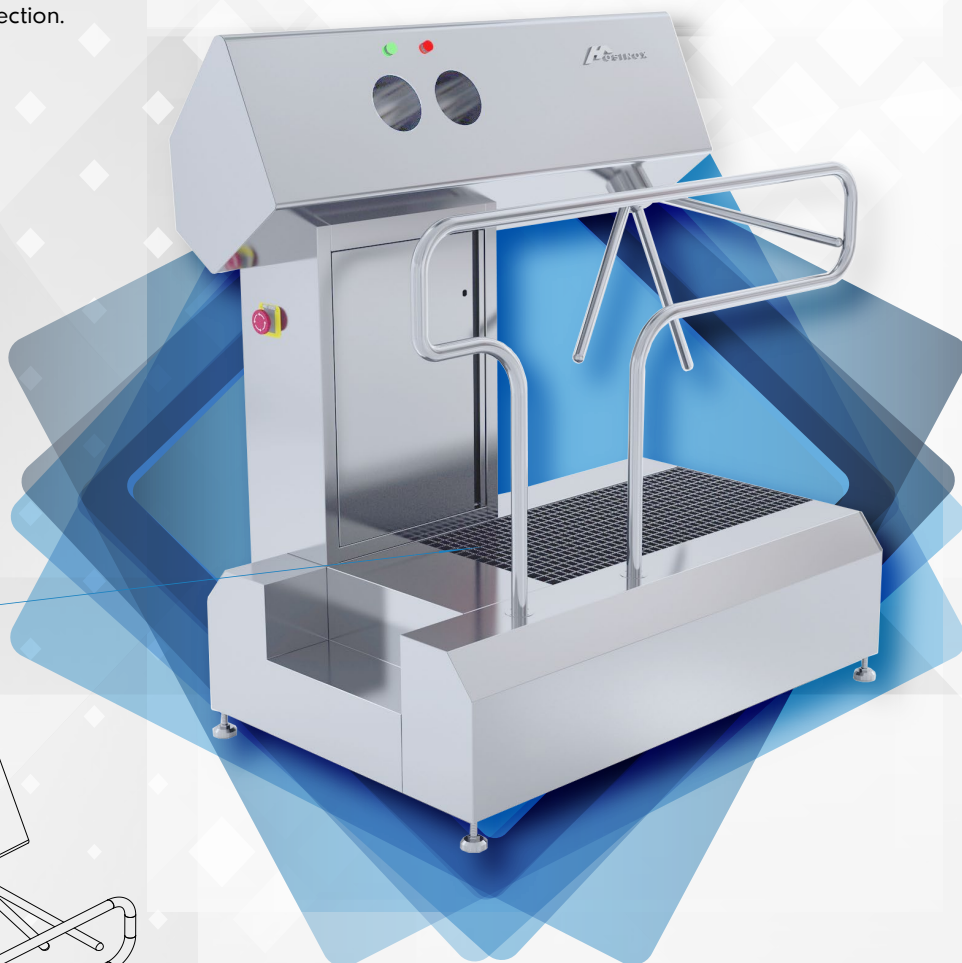
4.2

### • Hygiene station with access control, hand disinfection and grating sole:

• It is a very useful practical machine thanks to its easy installation and portability.  
It offers disinfection for both hands.  
This hygiene station can be easily used in places where it is no need to clean.

#### Technical Data

- Stainless steel **304**
- Power: 220V or 230V /60Hz for Single Phase. 380V or 400V /60Hz for 3 Phase.
- Tow hand dessentiol for disinfection.
- Tow gel injector for hand disinfection.
- Emergency stop.
- Photoelectric sensor **24v DC**.
- Gel pump **38w 35"**.



HSXGS10





4

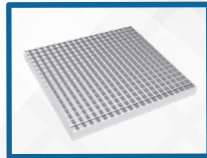
## HYGIENE STATION

### •Hygiene station with access control, hand disinfection and grating sole:

•It is a very useful practical machine thanks to its easy installation and portability.  
It offers disinfection for both hands.  
This hygiene station can be easily used in places where it is no need to clean.

#### Technical Data

- Stainless steel **304**
- Power: 220V or 230V /60Hz for Single Phase.  
380V or 400V /60Hz for 3 Phase.
- Tow hand dessential for disinfection.
- Tow gel injector for hand disinfection.
- Emergency stop.
- Photoelectric sensor 24v DC.
- Gel pump 38w 35"

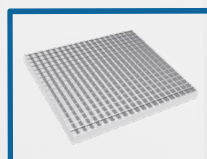


### •Hygiene station with access control, hand disinfection and grating sole:

•It is a very useful practical machine thanks to its easy installation and portability.  
It offers disinfection for both hands.  
This hygiene station can be easily used in places where it is no need to clean.

#### Technical Data

- Stainless steel **304**
- Power: 220V or 230V /60Hz for Single Phase.  
380V or 400V /60Hz for 3 Phase.
- Tow hand dessential for disinfection.
- Tow gel injector for hand disinfection.
- Emergency stop.
- Photoelectric sensor 24v DC.
- Gel pump 38w 35"





4

## HYGIENE STATION

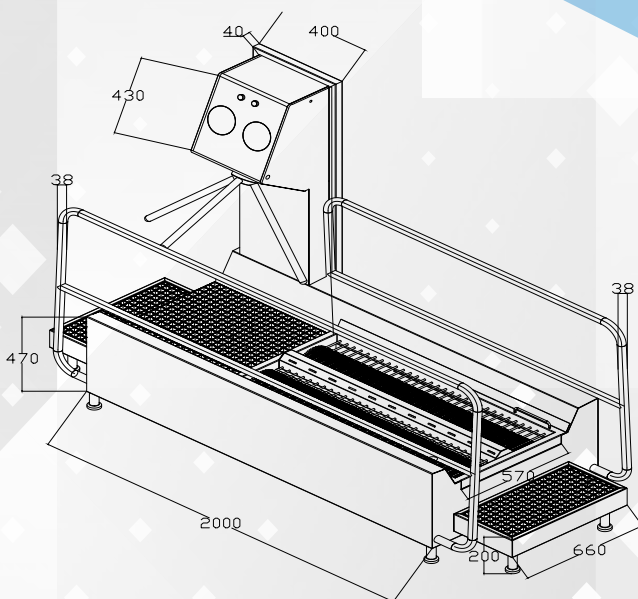
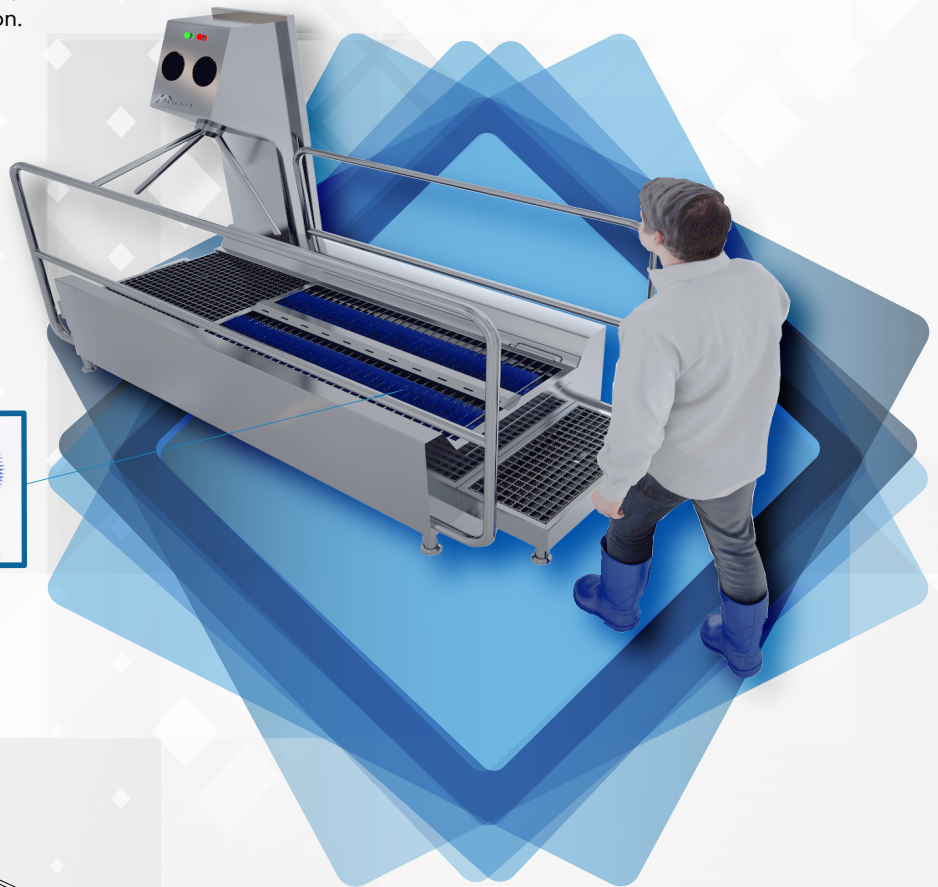
4.3

### •Hygiene station with hand disinfection turnstile and sole cleaner:

•This Hygiene station with two horizontally mounted and mutually rotating brushes provides a deep cleaning and sanitation for Shoe / Boot or Slipper soles with. Hygiene, which is a must for protection within the workshop, is maintained at a high level. It is designed to provide a high degree of safety by the mandatory passing of personnel through all hygienic controls included mandatory hands disinfection program ensures the best cleaning of the shoe soles as well as disinfection for hands.

#### Technical Data

- Stainless steel **304**
- Power: 220V or 230V /60Hz for Single Phase. 380V or 400V /60Hz for 3 Phase.
- Tow hand dessentiol for disinfection.
- Tow gel injector for hand disinfection.
- Tow Motor horsepower 2/1.
- Emergency stop.
- Photoelectric sensor 24v DC.
- Gel pump 38w 35".
- Solenoid valve 24v2/1".
- Brush length 600 mm.



HSXSC20







4

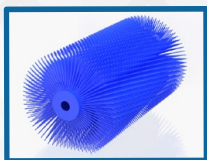
## HYGIENE STATION

### •Hygiene station with hand disinfection turnstile and sole cleaner:

•This Hygiene station with two horizontally mounted and mutually rotating brushes provides a deep cleaning and sanitation for Shoe / Boot or Slipper soles with. Hygiene, which is a must for protection within the workshop, is maintained at a high level. It is designed to provide a high degree of safety by the mandatory passing of personnel through all hygienic controls included mandatory hands disinfection program ensures the best cleaning of the shoe soles as well as disinfection for hands.

#### Technical Data

- Stainless steel **304**
- Power: 220V or 230V /60Hz for Single Phase.  
380V or 400V /60Hz for 3 Phase.
- Tow hand dessential for disinfection.
- Tow gel injector for hand disinfection.
- Tow Motor horsepower 2/1.
- Emergency stop.
- Photoelectric sensor 24v DC.
- Gel pump 38w 35".
- Solenoid valve 24v2/1".
- Brush length 600 mm.

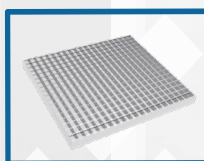


### •Hygiene station with hand disinfection turnstile and sole cleaner:

•This Hygiene station with two horizontally mounted and mutually rotating brushes provides a deep cleaning and sanitation for Shoe / Boot or Slipper soles with. Hygiene, which is a must for protection within the workshop, is maintained at a high level. It is designed to provide a high degree of safety by the mandatory passing of personnel through all hygienic controls included mandatory hands disinfection program ensures the best cleaning of the shoe soles as well as disinfection for hands.

#### Technical Data

- Stainless steel **304**
- Power: 220V or 230V /60Hz for Single Phase.  
380V or 400V /60Hz for 3 Phase.
- Tow hand dessential for disinfection.
- Tow gel injector for hand disinfection.
- Tow Motor horsepower 2/1.
- Emergency stop.
- Photoelectric sensor 24v DC.
- Gel pump 38w 35".
- Solenoid valve 24v2/1".
- Brush length 600 mm.







4

## HYGIENE STATION

4.4

### •Hygiene station with access control and double hand wash sink with pass through shoe cleaner with hand disinfection:

#### •Hygiene Station:

- with access control.
- with double hand wash sink with outlet tap with sensor.
- with pass through shoes cleaner with tow broach and water injection.
- with hand disinfection with gel injection with sensor.

•The motors of the rotating brushes as well as the water Power supplies are turned on and shut off immediately after leaving the station by the command of a sensor and a 30 second timer.

When simultaneously cleaning wet shoe soles, the following stations are cycled through successively:

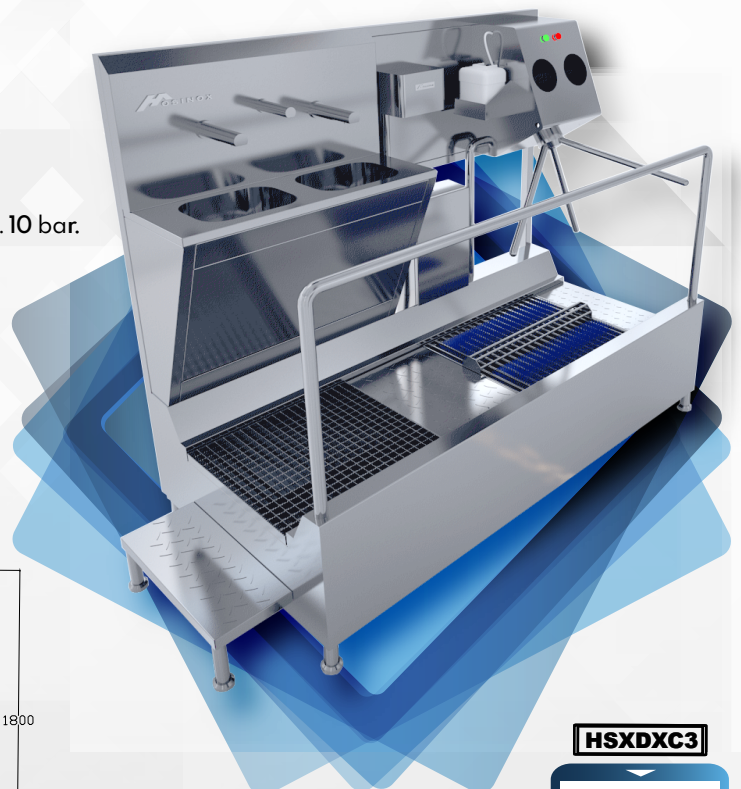
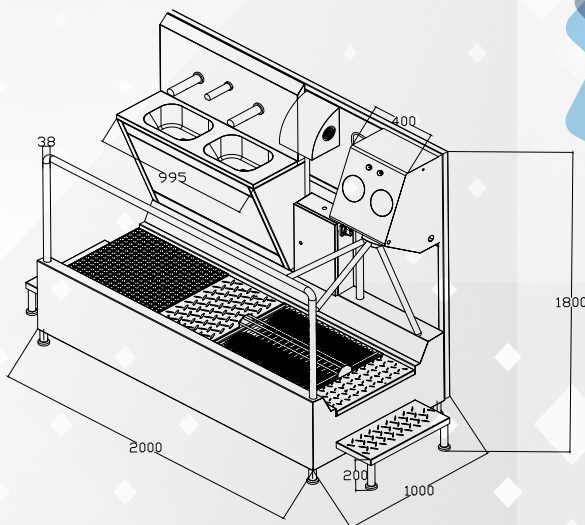
- 1 Sensor-controlled touch less hand sanitizer: An adjustable amount of sanitizer is dispensed into Both hands.
- 2 Actuating the hand sanitizer unit activates the unlock green light (red light = locked, Green light = open) and triggers a one-time triggering of the 3-arm electromechanical tripod. The tripod can alternately be put in the open or locked position in the opposite direction. A holder for the disinfectant gel and mount mounted easily accessible on the unit. An emergency button to ensure user safety.

### Technical Data

- Material: stainless steel **304**
- Power: 220V or 230V /60Hz for Single Phase. 380V or 400V /60Hz for 3 Phase.
- Control voltage: 24 V DC.
- Power Consumption: 1kW.
- Stainless steel control box:
  - mounted in an accessible manner on the unit.
  - Protection class IP 64.
  - Built-in fan to prevent condensation.
- Water inlet: 2/1" BSP, hot water approx. °45-30C, max. 10 bar.
- Water outlet: DN50.

### Options

- Dry cleaning of shoe soles with drawer for the collection and disposal of dirt.



HSXDXC3





## HYGIENE STATION

### • Hygiene station with access control and single hand wash sink with pass through shoe cleaner with hand disinfection:

#### • Hygiene Station:

- with access control.
- with single hand wash sink with outlet tap with sensor.
- with pass through shoes cleaner with tow broach and water injection.
- with hand disinfection with gel injection with sensor.

• The motors of the rotating brushes as well as the water Power supplies are turned on and shut off immediately after leaving the station by the command of a sensor and a 30 second timer.

When simultaneously cleaning wet shoe soles, the following stations are cycled through successively:

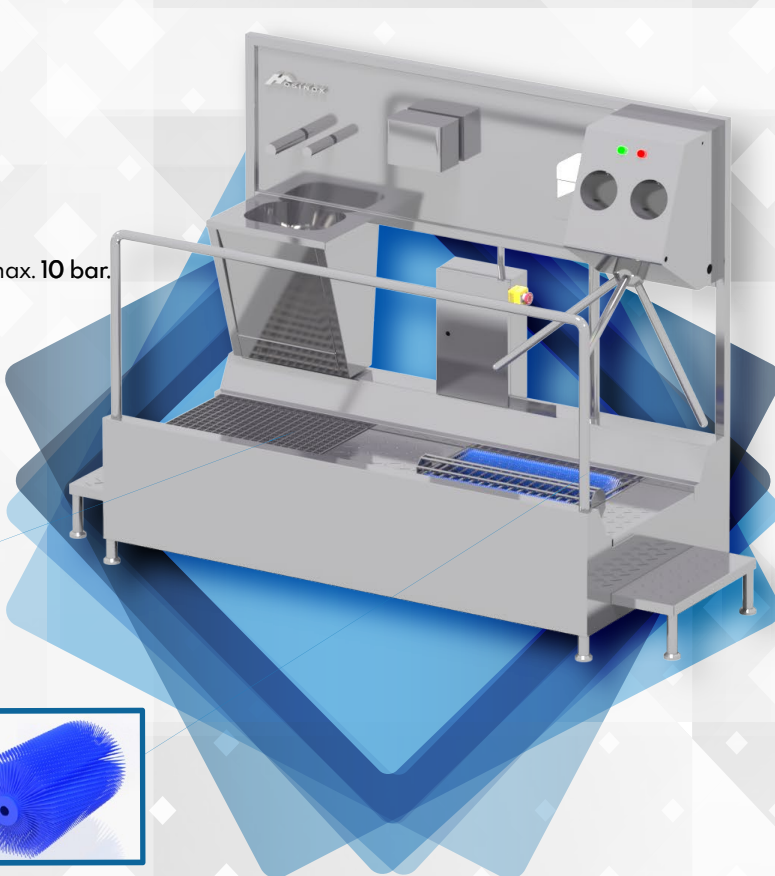
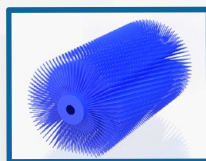
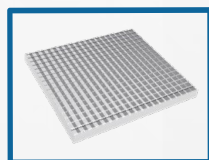
- 1 Sensor-controlled touch less hand sanitizer: An adjustable amount of sanitizer is dispensed into Both hands.
- 2 Actuating the hand sanitizer unit activates the unlock green light (red light = locked, Green light = open) and triggers a one-time triggering of the 3-arm electromechanical tripod. The tripod can alternately be put in the open or locked position in the opposite direction. A holder for the disinfectant gel and mount mounted easily accessible on the unit. An emergency button to ensure user safety.

#### Technical Data

- Material: stainless steel **304**
- Power: 220V or 230V /60Hz for Single Phase.  
380V or 400V /60Hz for 3 Phase.
- Control voltage: 24 V DC.
- Power Consumption: 1kW.
- Stainless steel control box:
  - mounted in an accessible manner on the unit.
  - Protection class IP 64.
  - Built-in fan to prevent condensation.
- Water inlet: 2/1" BSP, hot water approx. °45-30C, max. 10 bar.
- Water outlet: DN50.

#### Options

- Dry cleaning of shoe soles with drawer for the collection and disposal of dirt.



## 4 HYGIENE STATION

### 4.5 •Hygiene station with hand disinfection, hand wash sink, hand dryer, turnstile sole and boot cleaner:

- 304 stainless steel materials meet international hygiene standard.
- specialized in insoles , boot and hand sterilization
- Module design which can meet your workshop space.
- Automatic operation, avoid contact pollution
- High efficiency and good cleaning performance. 6.food factory priority cleaning equipment.

#### Technical Data

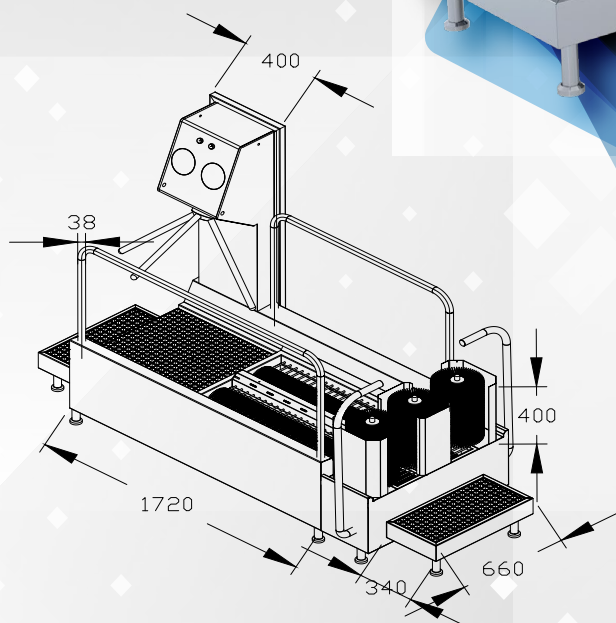
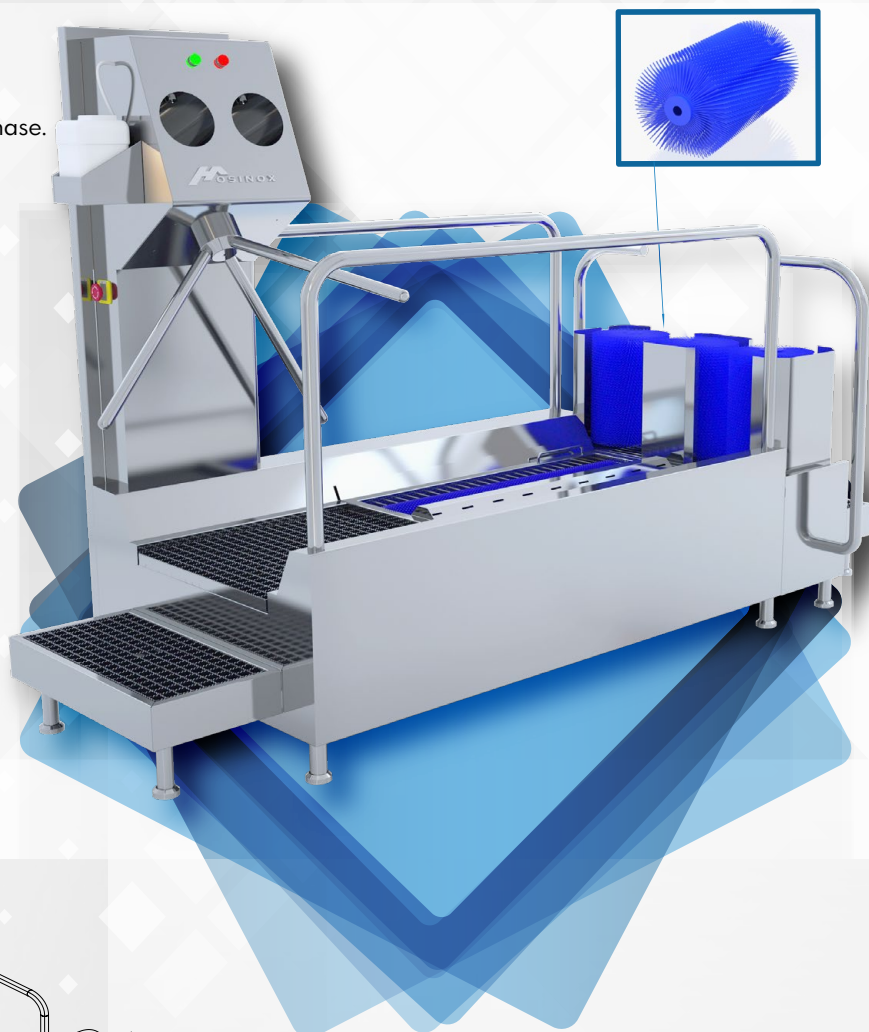
- Stainless steel **304**
- Power: 220V or 230V /60Hz for Single Phase.  
380V or 400V /60Hz for 3 Phase.
- Tow hand dessential for disinfection.
- Tow gel injector for hand disinfection.
- Tow Motor 2/1 horsepower.
- Emergency stop.
- Photoelectric sensor 24v DC.
- Gel pump 38w 35".
- Solenoid valve 24v 2/1".
- Water connection 4/3"MW.
- Drain 2".

#### Effective Brush Length

- sole cleaning: 2 x 600 mm
- rod brushes: 2 x 300 mm

#### Options

- Right-hand version.
- Left-hand version.


**HSXSBC4**




## 4 HYGIENE STATION

### •Hygiene station with hand disinfection, hand wash sink, hand dryer: turnstile sole and boot cleaner:

- 304 stainless steel materials meet international hygiene standard.
- specialized in insoles , boot and hand sterilization
- Module design which can meet your workshop space.
- Automatic operation, avoid contact pollution
- High efficiency and good cleaning performance. 6.food factory priority cleaning equipment.

#### Technical Data

- Stainless steel **304**
- Power: 220V or 230V /60Hz for Single Phase.  
380V or 400V /60Hz for 3 Phase.
- Tow hand dessentiol for disinfection.
- Tow gel injector for hand disinfection.
- Tow Motor 2/1 horsepower.
- Emergency stop.
- Photoelectric sensor 24v DC.
- Gel pump 38w 35".
- Solenoid valve 24v 2/1".
- Water connection 4/3"MW.
- Drain 2".

#### Effective Brush Length

- sole cleaning: 2 x 600 mm
- rod brushes: 2 x 300 mm

#### Options

- Right-hand version.
- Left-hand version.







4

## HYGIENE STATION

4.6

### •Hygiene station with hand disinfection, hand wash sink, hand dryer, turnstile sole and boot cleaner:

- 304 stainless steel materials meet international hygiene standard. Specialized in insoles, boot and hand cleaning and sterilization module design which can meet your workshop space.
- Automatic operation, avoid contact pollution
- High efficiency and good cleaning performance.
- 6. Food factory priority cleaning equipment.

#### Technical Data

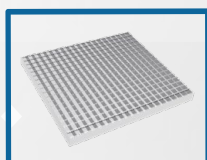
- Stainless steel **304**
- Power: 220V or 230V /60Hz for Single Phase.  
380V or 400V /60Hz for 3 Phase.
- Tow hand dessential for disinfection.
- Hand wash sink with swap dispenser
- Hand dryer 1500 w.
- Tow gel injector for hand disinfection.
- Tow Motor 2/1 horsepower.
- Emergency stop.
- Photoelectric sensor 24v DC.
- Gel pump 38w 35".
- Solenoid valve 24v 2/1".
- Water connection 4/3"MW.
- Drain 2".

#### Effective Brush Length

- sole cleaning: 2 x 600 mm
- rod brushes: 2 x 300 mm

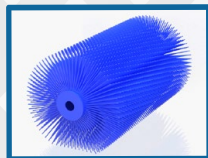
#### Options

- Right-hand version.
- Left-hand version.

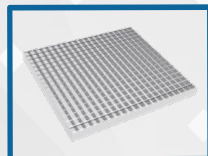
**HSXSBC5**




## HYGIENE CATALOG 2023



Brush



Gratting



Washing hands with water



Hand sanitizing with gel



Hand washing with soap



Intelligent disinfection door



Room disinfection cabinet



Sterilization of boot

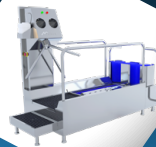
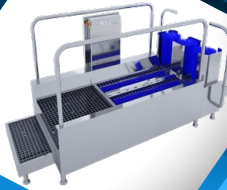
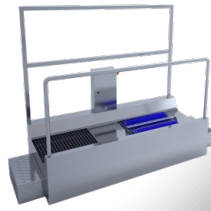


UV Light



Apron cleaning





HOSINOX COMPANY |

رؤية  
2030  
المملكة العربية السعودية  
KINGDOM OF SAUDI ARABIA



SAUDI  
MADE



✉ SALES@HOSINOX.COM

🌐 WWW.HOSINOX.SA

🌐 WWW.HOSINOX.COM